

Solicitation Amendment No. 002

Page 1 of 1

To: Prospective Bidder/Offeror:	Date:
Prospective Proposers	January 20, 2017
Project Title:	Project No.:
Parking Lot & Parking Garage Cleaning Services	RFP 17-24
<p>The Request For Proposals (Project RFP No. 17-24) is hereby amended as set forth below:</p> <ol style="list-style-type: none"> 1) Due to a typo of the submittal due date, Page No. 1 of 41, has been replaced in its entirety, see the attached, revised page. 2) Locations where added to the EXCEL Schedule of Items & Prices Worksheet and Page Nos. 9, 10, 11 & 12 off 41, have been replaced in its entirety; see the attached, revised EXCEL Worksheet and Page Nos. 9, 10, 11 & 12 off 41. 3) The original maps have been changes therefore; the original mapping package has been replaced in its entirety. See the attached, REVISED Parking Lot & Parking Garage Mapping Locations. <p>Except as provided herein, all terms and conditions of the solicitation remain unchanged and in full force and effect.</p>	
Company Name (Bidder/Offeror):	
Signed by:	Date:
Name (Type or Print):	Title:

HOUSTON COMMUNITY COLLEGE SYSTEM

**REQUEST FOR PROPOSAL
(SERVICES)**

PARKING LOT & PARKING GARAGE CLEANING SERVICES

RFP NO.: 17-24

ISSUED BY:

Procurement Operations Department

FOR:

Facilities Department

PROCUREMENT OFFICER:

Arturo Lopez, Sr. Buyer

Telephone: (713) 718-7463

E-mail: Arturo.Lopez@HCCS.edu

**PROPOSALS ARE DUE AT THE ADDRESS SHOWN BELOW
NO LATER THAN:**

February 7, 2016 by 2:00 p.m. (local time)

at

Houston Community College

Procurement Operations Department

3100 Main Street, 11th Floor

Houston, Texas 77002

Ref: RFP 17-24 – Parking Lot & Parking Garage Cleaning Services

Visit the HCC Procurement Operations Department website to get more information on this and other business opportunities. While at our website we invite you to Register as a Vendor, if already registered, please confirm your contact information is current.

Section 2 – Schedule of Items and Prices

1. Instructions

Proposer must complete this section in its entirety, and submit this form in a separate sealed envelope and label it "Price Proposal".

Please provide a Total Proposed Price reflecting all project costs to successfully complete the project. Work requirements will be specified in individual purchase orders issued by Houston Community College.

2. Total Cost

I have received and thoroughly examined the specifications and work schedule and have visited and examined the work sites. I have also received and considered all solicitation amendments as posted on the solicitation website and have included those provisions in my Proposal.

I understand the work to be done as provided in the scope of work and specifications. I further understand that the work is subject to the review and approval of Houston Community College System and submit the following Proposal.

NOTE: Proposers must respond to and complete the entire spreadsheet below and the total for all line items.

Line No.	Campus	Address	No. of Months Parking Lot.	No. of Months Parking Garage	Frequency: Monthly	Price per JOB	Total Annual Cost
A	Parking Garages – Twice per month service						
1	Central Campus: Fine Arts Parking Structure (5 levels) Map 1, Site F	3517 Austin St., 77004		12	2		
2	Hayes Early College: Parking Garage. (5 levels) Map 12, Site C	2811 Hayes Rd, 77082		12	2		
3	Southeast Campus: Parking Garage: (6 levels) Map 14, Site D	2524 Garland St., 77087		12	2		
4	Admin Parking Garage (8 levels) Map 20, Site B	3220 Main St., 77002		12	2		
5	Southwest Campus: West. Loop Parking Garage. (5 levels) Map 17, Site B	5601 West Loop South, 77081		12	2		
6	Northeast: Northline Parking Garage (4 levels) Map 6, Site B	8001 Fulton St., 77022		12	2		
B	Loading Dock, Once a Month						
1	Rosalie St., Loading Dock, Map 20, Site C	3100 Main St., 77002		12	1		
2	Hayes, Loading Dock, Map 12, Site B	2811 Hayes Rd, 77082		12	1		
C	Warehouse, Once a Month						
1	Fannin Warehouse (Map 21) Warehouse, Map 21, Site A	9425 Fannin St., 77045		12	1		
2	Delano Warehouse (Map 22) Warehouse, Map 22, Site A	1102 Delano St., 77003		12	1		

Scheduled: Pressure Washing. Quarterly & 1st week of the month service						
D	Parking Garages-Pressure Washing					
1	Central Campus: Fine Arts Parking Structure (5 levels) Map 1	3517 Austin St., 77004		4	1	
2	Northwest Campus: Hayes Early College Parking Garage. (5 levels) Map 12	2811 Hayes Rd, 77082		4	1	
3	Southeast College: Parking Garage: (6 levels)	2524 Garland St., 77087		4	1	
4	Admin Parking Garage (8 levels)	3220 Main St., 77002		4	1	
5	Southwest Campus: West Loop Parking Garage. (4 levels) Map 17 site B	5601 West Loop South, 77081		4	1	
6	Northeast Campus: Northline Parking Garage (5 levels) Map 6 – site "B"	8001 Fulton St., 77022		4	1	
E	Loading Dock –Pressure Washing					
1	Rosalie St, Loading Dock	3100 Main St., 77002		4	1	
2	Hayes, Loading Dock	2811 Hayes Rd		4	1	
Scheduled: Parking Lot Sweeping & Cleaning Service. Once a Month						
G	Coleman College Campus (Map)					
1	Coleman Main, Parking lot. Map 19, Site A	1900 Pressler St., 77030	12		1	
2	Coleman Annex, Parking lot. Map 19, Site B	1900 Pressler St., 77030	12		1	
H	Central College Campus (Map 1)					
1	Jew Don Boney Parking Lot. Map 1, Site B	1215 Holman St., 77004	12		1	
2	Almeda (Heinen), Parking lot. Map 1, Site H	1500 block of Holman St., 77004	12			
3	JBW Parking Lots. Map 1, Site E	1200 & 1400 Alabama St., 77004	12		1	
4	Learning HUB & Science Building Parking lot. Map 1, Site A	3500 Fannin St., 77004	12		1	
5	Annex parking lot. Map 1, Site L	1318 Alabama St., 77004	12		1	
6	Central Cooling Plant Parking lot. Map 1, Site N	1300 Alabama St; 77004	12		1	
7	Educational Development Ctr (EDC), Parking lot. Map 1, Site D	3214 Austin St., 77004	12		1	
8	3601 Fannin Parking lot. Map 1	3601 Fannin St., 77004	12		1	
9	Willie Gray Hall (Map 2), Parking lot	1990 W. Airport Blvd., 77051	12		1	
I	Northeast College:					
1	Automotive Training Ctr, Parking Lot A, Map 3, Site A	4638 Airline Dr, 77022	12		1	
2	Codwell Hall Parking lot, Map 4, Site A,C,D	555 Community College Dr, 77013	12		1	
3	Hub/Workforce parking lot, Map 4, Site B	555 Community College Dr, 77013	12		1	
4	Roland Smith Parking Lot, Map site D	555 Community College Dr, 77013	12		1	
5	R. Smith Training Parking lot, Map 4, Site E	555 Community College Dr, 77013	12		1	
6	PSI Range lot, Map 4, Site H	555 Community College Dr, 77013	12		1	
7	PSI Burn lot, Map 4, Site G	555 Community College Dr, 77013	12		1	
8	PSI Training lot, Map 4, Site F	555 Community College Dr, 77013	12		1	
9	North Forest Campus North Forest. Bldg. A, Parking lot, Amp 5, Site A	6010 Little York Road, 77016	12		1	

10	Northline Campus Northline Academic Center Parking lot, Map 6, Site A	8001 Fulton St., 77022	12		1		
2	Lyerly Parking lot, Map 6, Site D	91 Lyerly St. Houston, TX 77022	12		1		
Scheduled: Parking Lot Sweeping & Cleaning Service. Once a Month							
L	Northwest College						
1	Katy Mills Campus Main Bldg. Parking lot, Map 9, site A	25403 Kingsland Blvd. Houston, TX 770494					
2	Katy Campus Katy Main Bldg. Parking lot. Map 10, site A	1550 Fox lake Dr. Houston, TX 77084	12		1		
3	Park Row St., Parking lot, Map 10, site B	1550 Fox lake Dr. Houston, TX 77084	12		1		
4	Annex Parking lot. . Map 10, site C	1550 Fox lake Dr. Houston, TX 77084	12		1		
5	Fox lake Parking lot. . Map 10, site D	1550 Fox lake Dr. Houston, TX 77084	12		1		
6	Spring Branch Campus Main Bldg. Parking lot, Map 11, site A	1010 West SH Pkwy. Houston, TX 77042	12		1		
7	Performing Arts Ctr, Parking lot. Map 11, site B	1010 West SH Pkwy. Houston, TX 77042	12		1		
8	Alief Campus (Map 12) Hayes Rd. Parking lot, Map 12, Site A&B	2811 Hayes Rd. Houston, TX 77072	12		1		
9	Early College Parking lot, Map 12 Site C	2811 Hayes Rd. Houston, TX 77072	12		1		
10	Alief Bissonnet Campus (Map 12) Main Bldg. Parking lot, Map 12, Site A	13803 Bissonnet St. Houston, TX 77072	12		1		
11	Workforce Parking lot, Map 12, Site B	13803 Bissonnet St. Houston, TX 77072	12		1		
M	Southeast College						
1	Southeast Campus (Map 14) Angela Morales Parking lot, Map 14, site A	6816 Rustic St. Houston, TX 77087	12		1		
2	Felix Morales Parking lot, Map 14, site B	6816 Rustic St. Houston, TX 77087	12		1		
3	Workforce /SLEH Parking lot, Map 14, site C	6816 Rustic St. Houston, TX 77087	12		1		
4	Felix Fraga (Map 13) Main Bldg. North Parking lot, Map 13,site A	301 N. Drennan St. Houston, TX 77003	12		1		
5	Main Bldg. South Parking lot, , Map 13,site B	301 N. Drennan St. Houston, TX 77003	12		1		
6	Early College Parking lot, , Map 13,site C	301 N. Drennan St. Houston, TX 77003	12		1		
N	Southwest Campus						
1	Southwest Loop Campus (Map 17) Main Parking lot, Map 17, site "A"	5601 West loop St. Houston, TX 77081	12		1		
2	Gulfton Campus (Map 15) Main bldg. Parking lot, Map 15, site A	5407 Gulfton Dr. Houston, TX. 77081	12		1		
3	Rear parking lot, Map 15, site A	5407 Gulfton Dr. Houston, TX. 77081	12		1		
4	Stafford Campus (Map 18) Scarcella Science & tech Ctr Parking lot. Map 18, site A	10041 Cash Rd. Sugarland, TX. 77477	12		1		
5	SW Learning Hub North Parking lot, Map 18, site B	10041 Cash Rd. Stafford, TX. 77477	12		1		
6	SW Learning Hub South Parking lot, Map 18, site C	10041 Cash Rd. Stafford, TX. 77477	12		1		
7	SW Learning Hub Annex Parking lot, Map 18, site D	10041 Cash Rd. Stafford, TX. 77477	12		1		
8	Fine Art Parking lot, Map 18, site E	9910 Cash Rd. Stafford, TX. 77477	12		1		

9	SW Workforce Parking Lot, (Map 18) – Site "F"	13622 Stafford Road, Stafford, TX 77477	12		1		
10	Bray Oaks Parking Lot (Map 16)-Site "A"	8855 W.Bellford Ave. Houston TX 77031	12		1		

Annual Total: \$ _____

Total Proposed Cost (Initial Three-Year Term):

\$ _____

(Transferred from total on Worksheet)

Otional Hourly Price Schedule:

The College requests that an **hourly rate** be quoted in addition to the total bid for power-washing at the facilities which could be requested on an as needed basis; the fee quoted should include the use of the vendor's own equipment for this task. (The hourly price sheet will not be considered in the evaluations)

1. Price Evaluation

Price points shall be calculated based on the following formula:

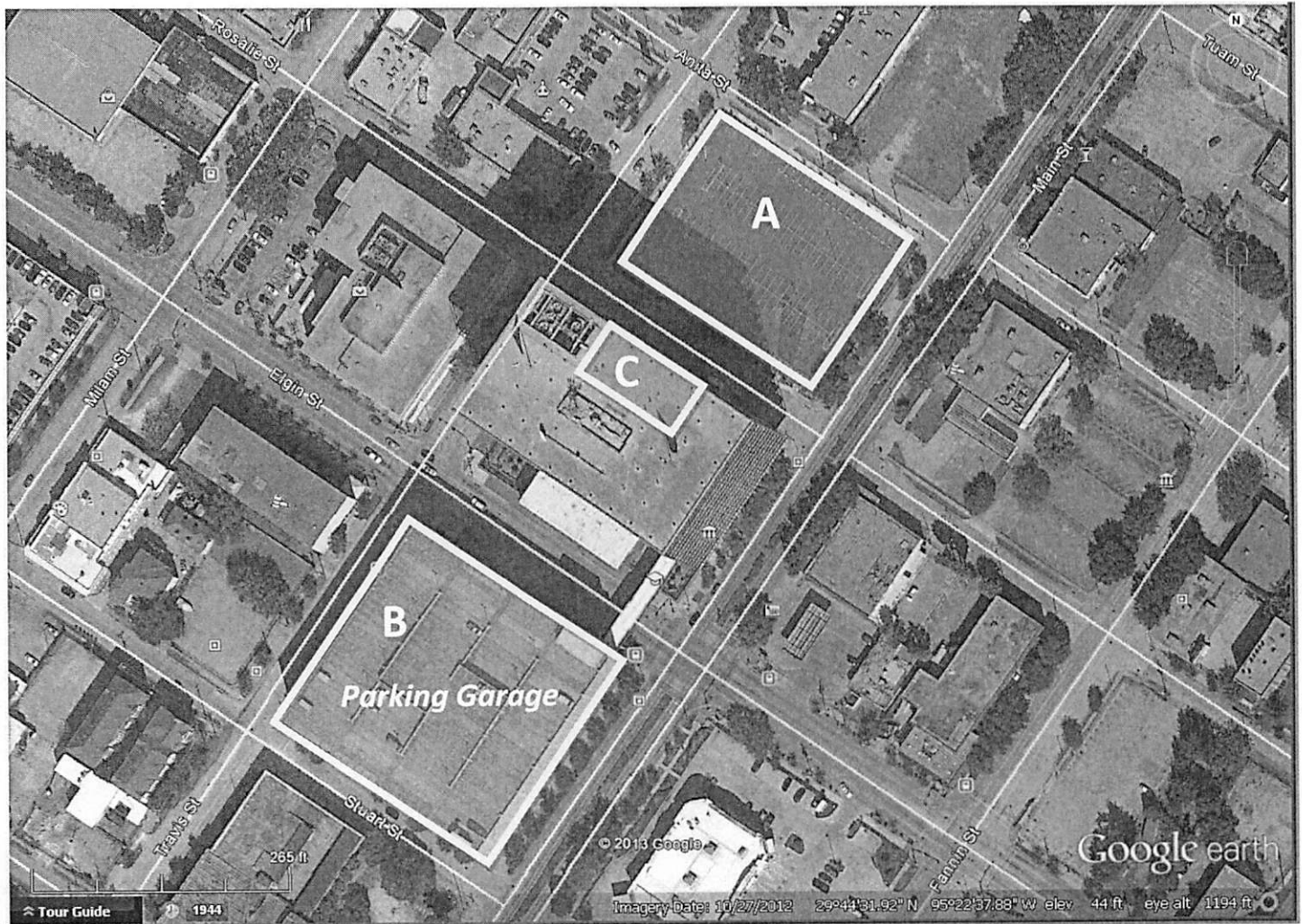
$$\text{Lowest Total Proposed Cost} / \text{Proposer's Total Proposed Cost} \times \text{Available Price Points} = \text{Price Score}$$

2. Price Proposal Signature

The information in this RFP is to be utilized solely for preparing the proposal response to this RFP and does not constitute a commitment by HCC to procure any product or service in any volume.

Name:	
Title:	
Date:	
Signature:	

Balance of page intentionally left blank.



Parking areas at the HCC Administration Building

A Rosalie parking lot:

3000 Main Street

B 3100 Main parking garage:

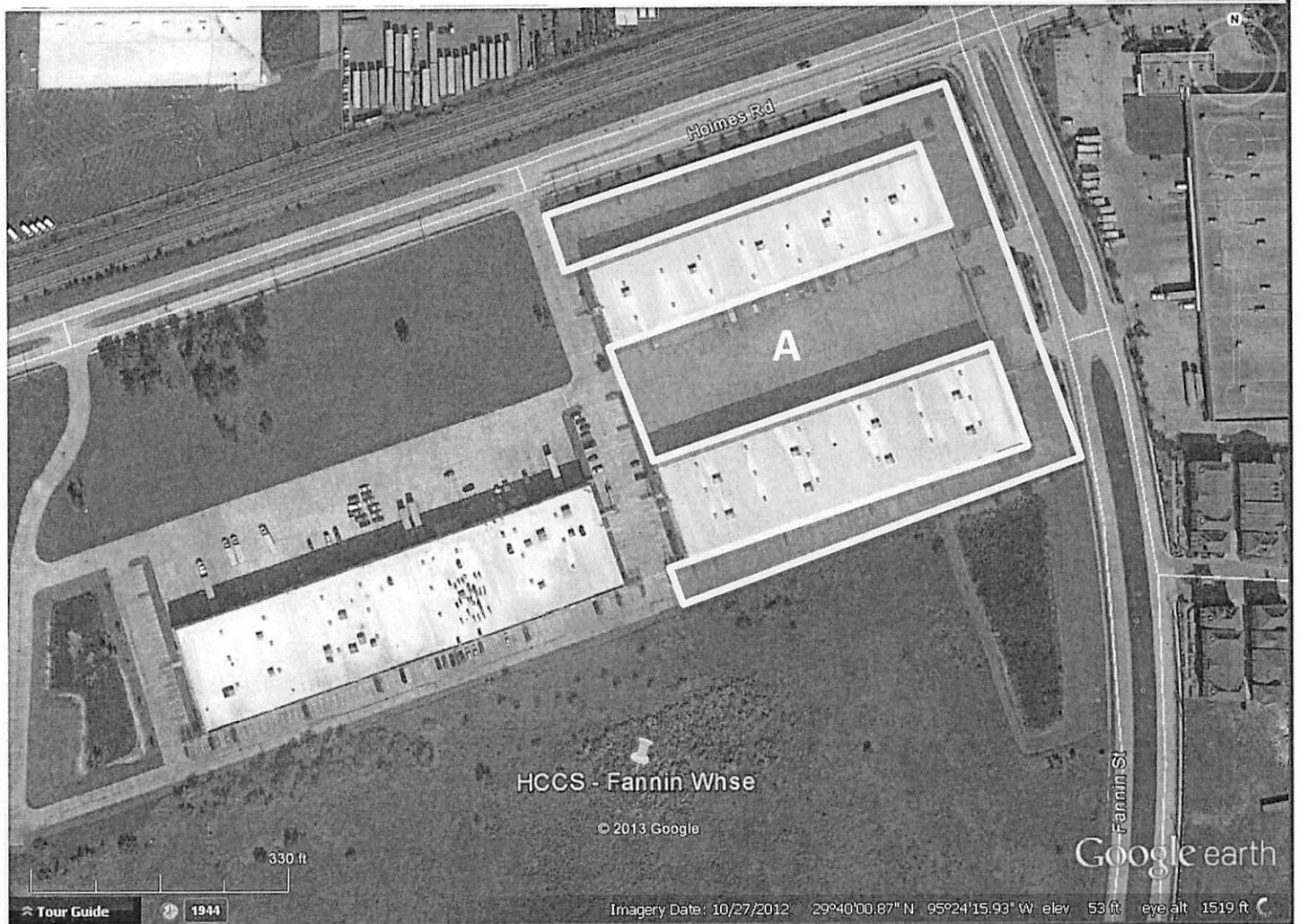
3200 Main Street - Eight (8) level garage

C Loading dock area:

3100 Main, 1st floor, rear of building

Fannin Warehouse

Map 21



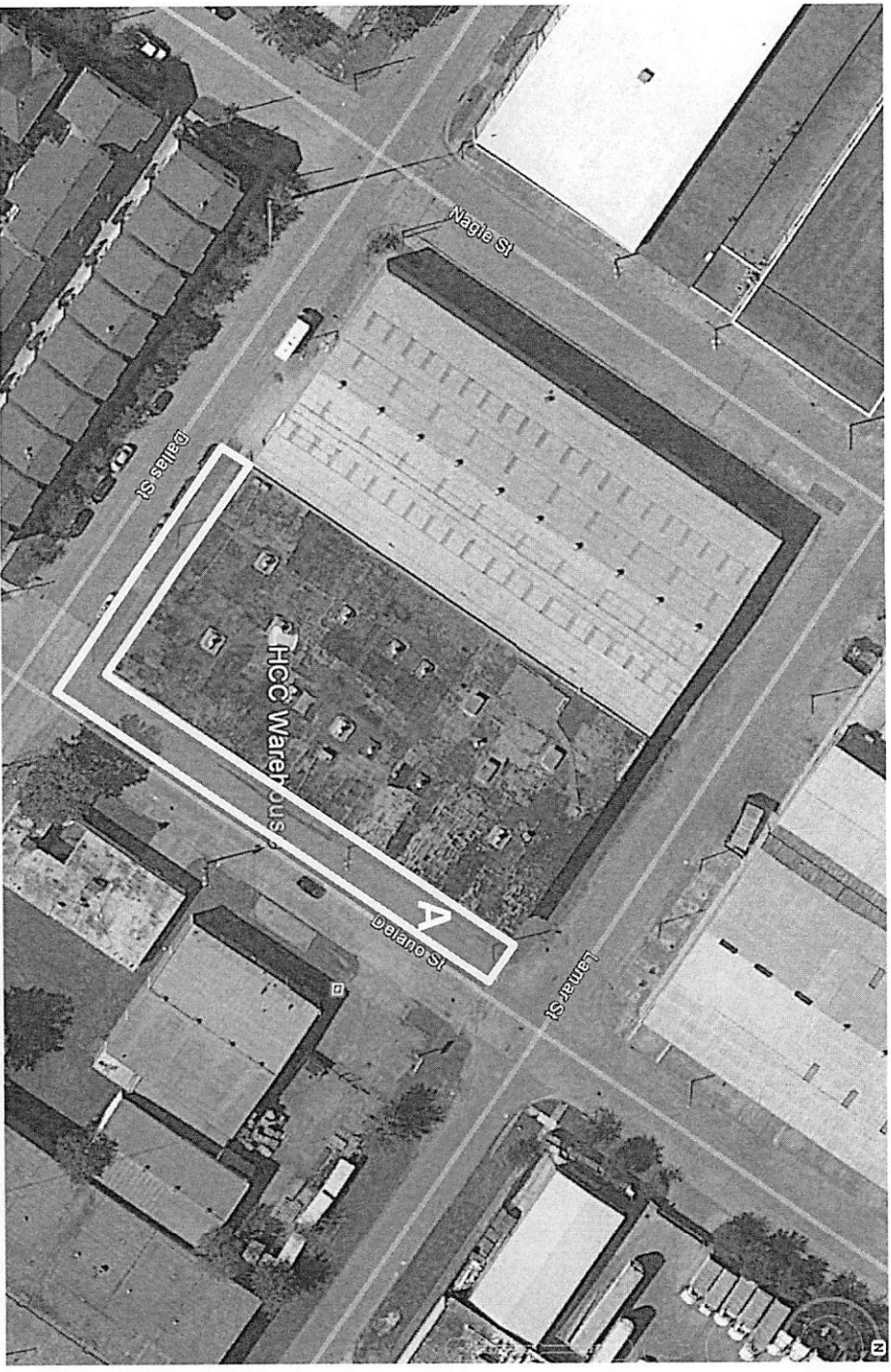
Parking areas at the HCC System - Fannin Warehouse

A Warehouse B and D parking lot:

9424 Fannin Street

Delano Warehouse

Map 22

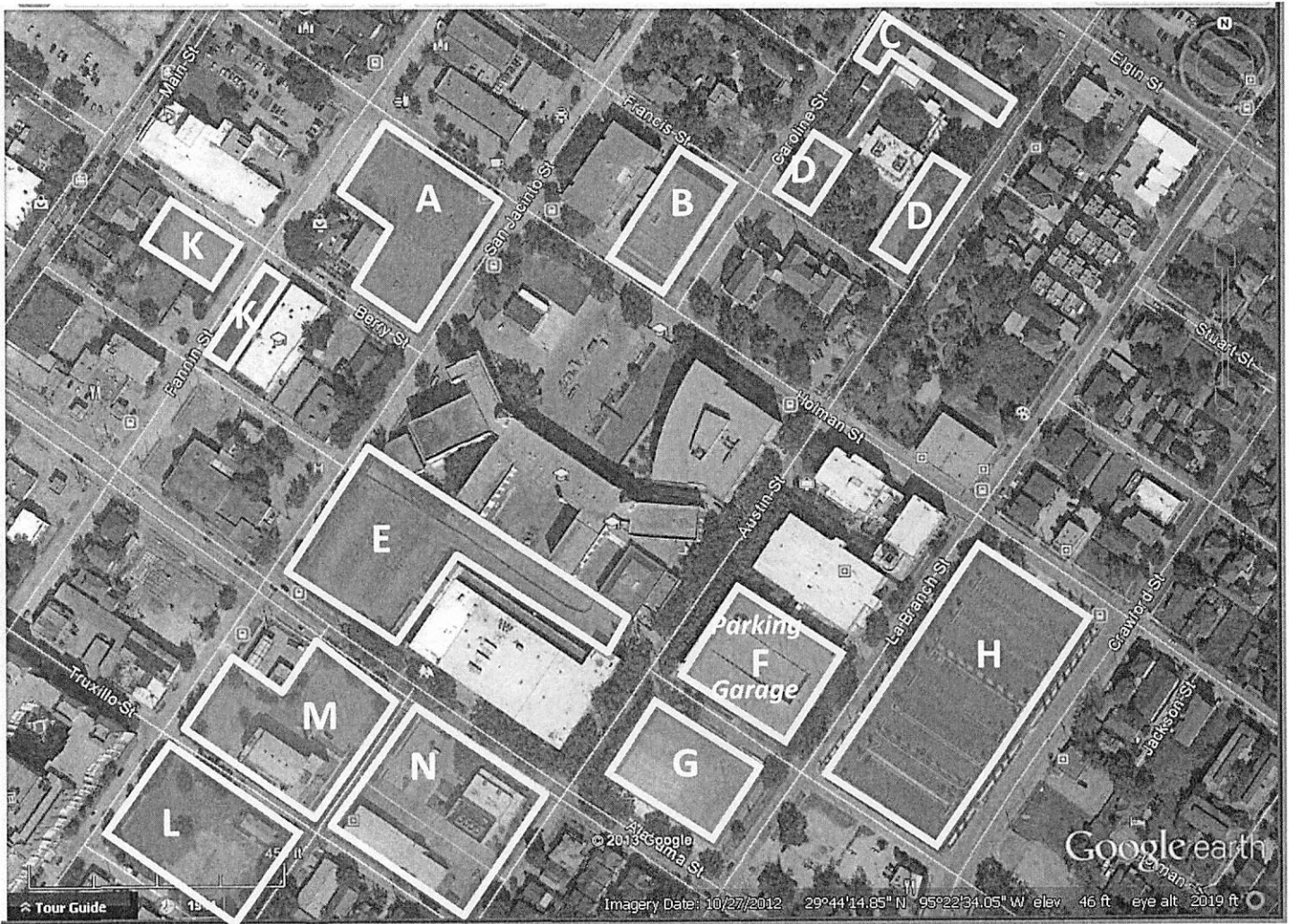


Sweep areas at the HCC System - Delano Warehouse

- A Delano Warehouse:
1102 Delano Street

Central Campus

Map 1



Parking areas at the HCC Central Campus

A Hub / San Jacinto parking lot:
3500 Fannin Street

B JDB parking lot:
1215 Holman Street, 1st Level

C EDC Front parking area:
3214 Austin Street

D (2) EDC Francis St. parking lots:
3214 Austin Street

E JBW parking lot:
1200 Alabama Street

F Fine Arts parking garage:
Five (5) levels

G Alabama (JBW) parking lot:
1400 Alabama Street

H Almeda (Heinen) parking lot:
1500 block of Holman

K (2) Fannin parking lots:
3601 Fannin Street

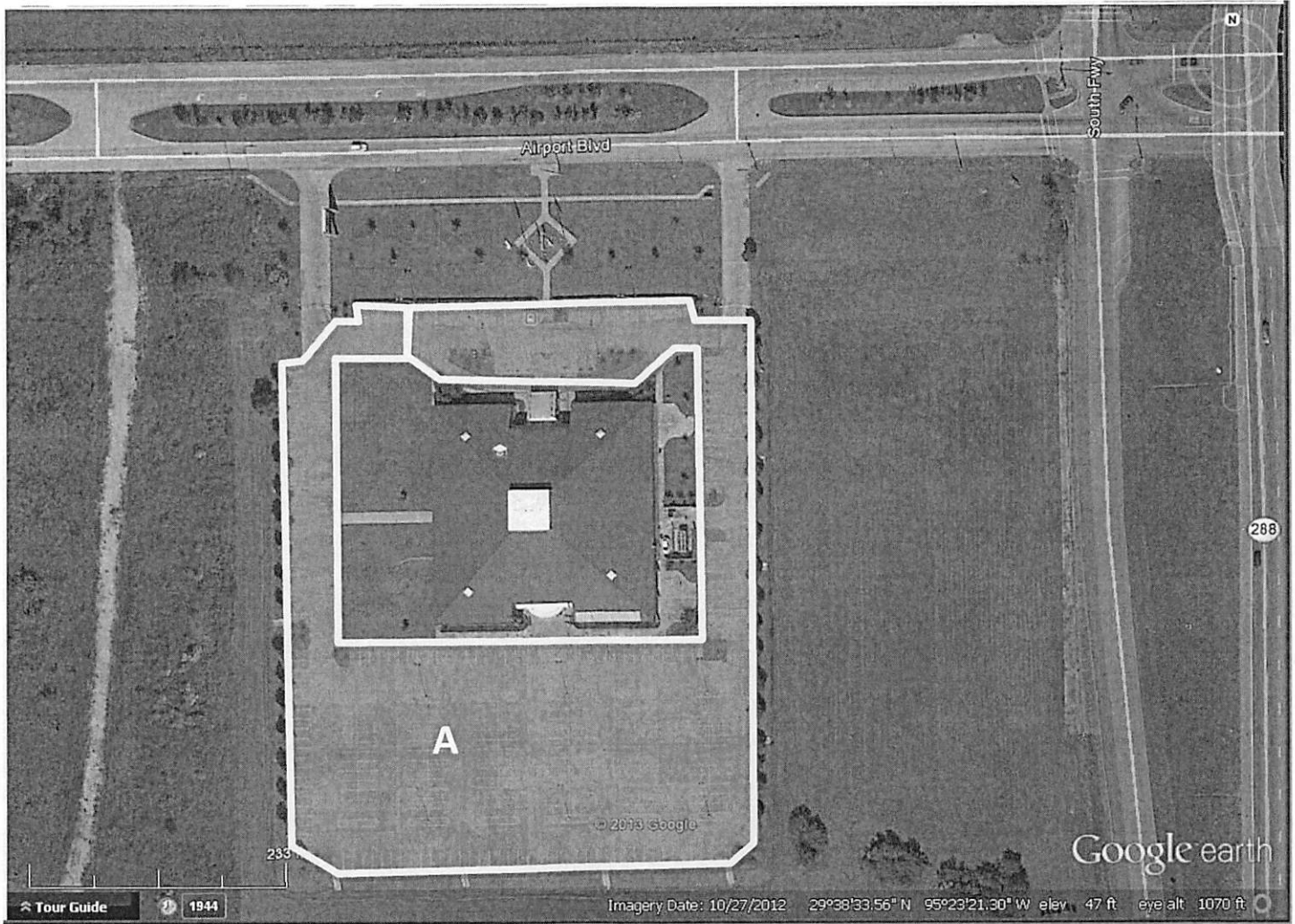
L Annex parking lot:
1318 Alabama Street

M Buffalo / JBW parking lot:
1200 Alabama Street

N Cnt Cooling Plt parking lot:
1300 Alabama Street

Central Campus South

Map 2

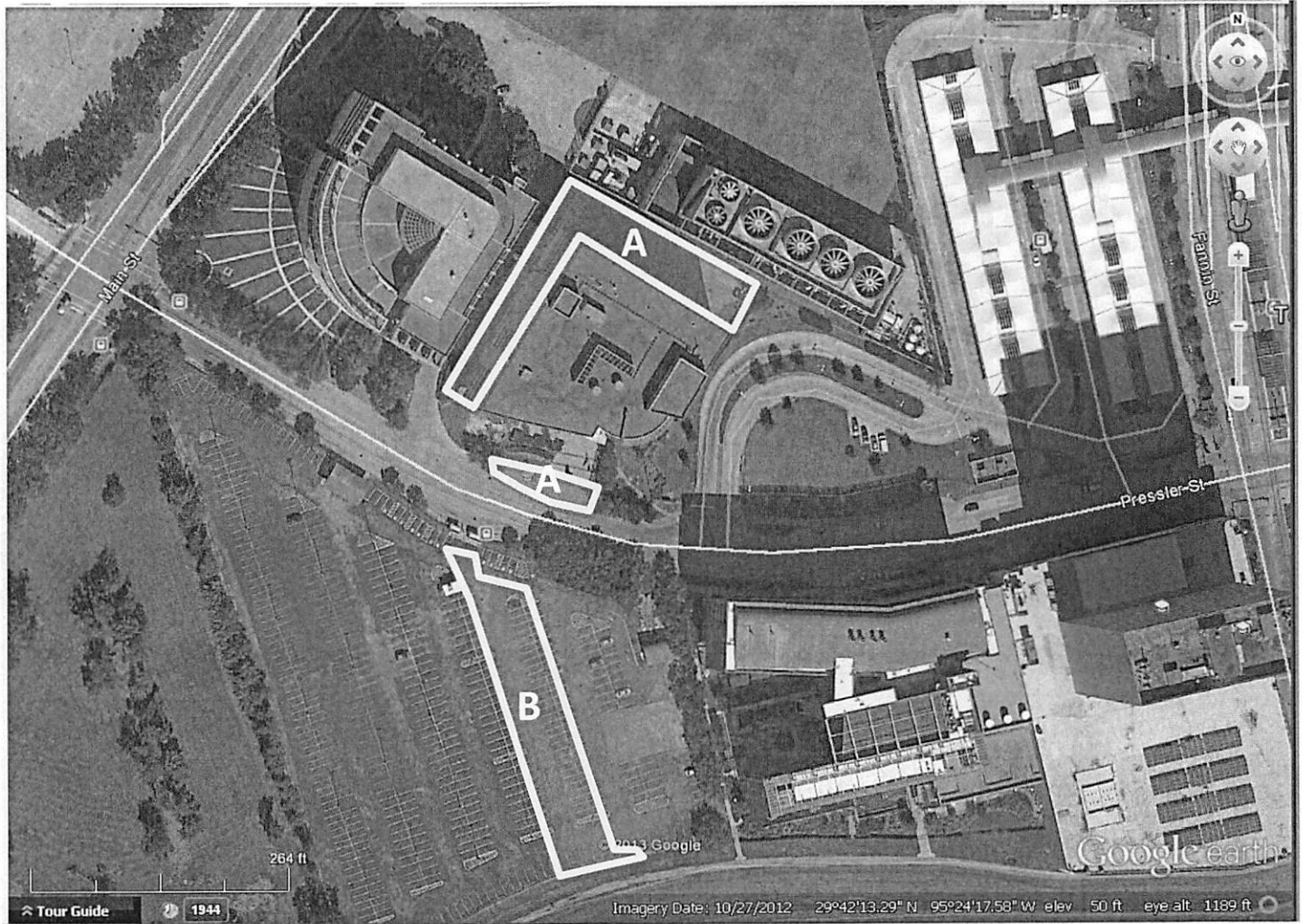


Parking areas at the HCC Central Campus South HWY 288

A Willie Gay Hall parking lot:
1990 West Airport Boulevard

Coleman Campus

Map 19



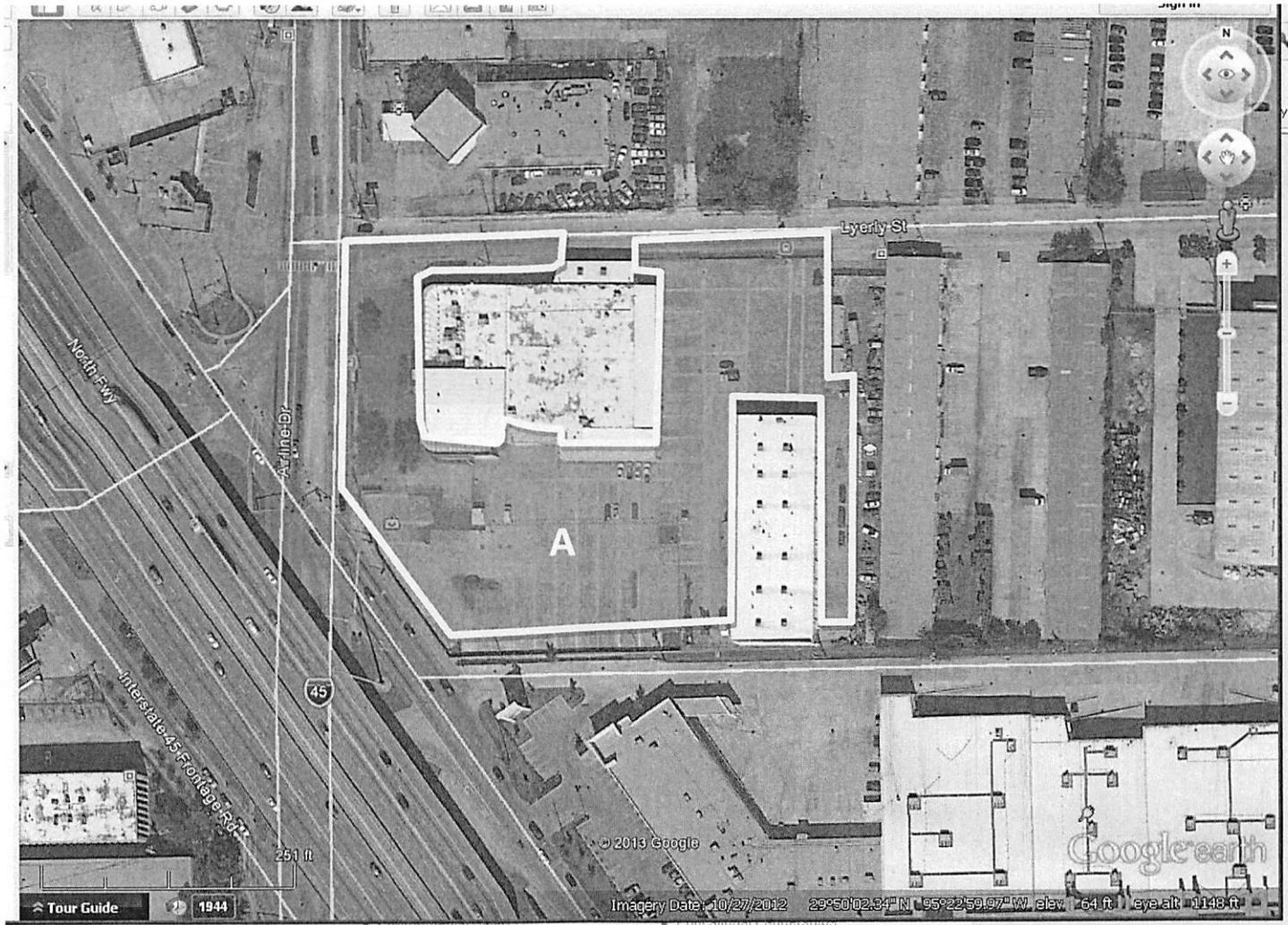
Parking areas at the HCC Coleman Health Science Center Campus

A Coleman parking lot:
1900 Pressler Street

B Annex parking lot:
1900 Pressler Street

NE Automotive Training

Map 3



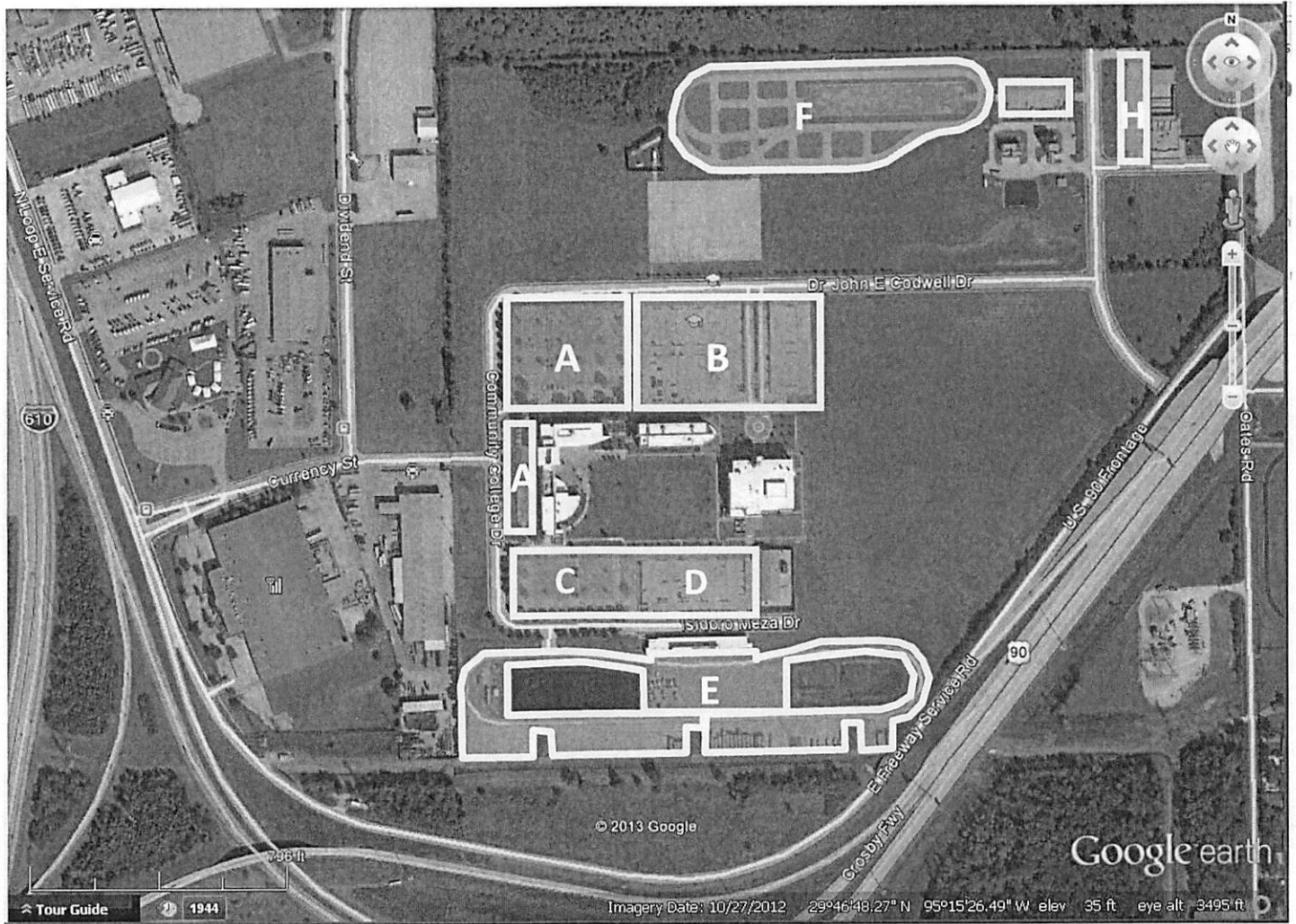
Parking areas at the HCC Automotive Technology Training Center Campus

A Main building and shop parking lot:

4638 Airline Drive

Northeast Campus

Map 4



Parking areas at the HCC Northeast Campus

A Codwell parking lot:
555 Community College Drive

B Hub / Workforce parking lot:
555 Community College Drive

C Codwell A parking lot:
555 Community College Drive

D Roland Smith parking lot:
555 Community College Drive

E Roland Smith training area:
555 Community College Drive

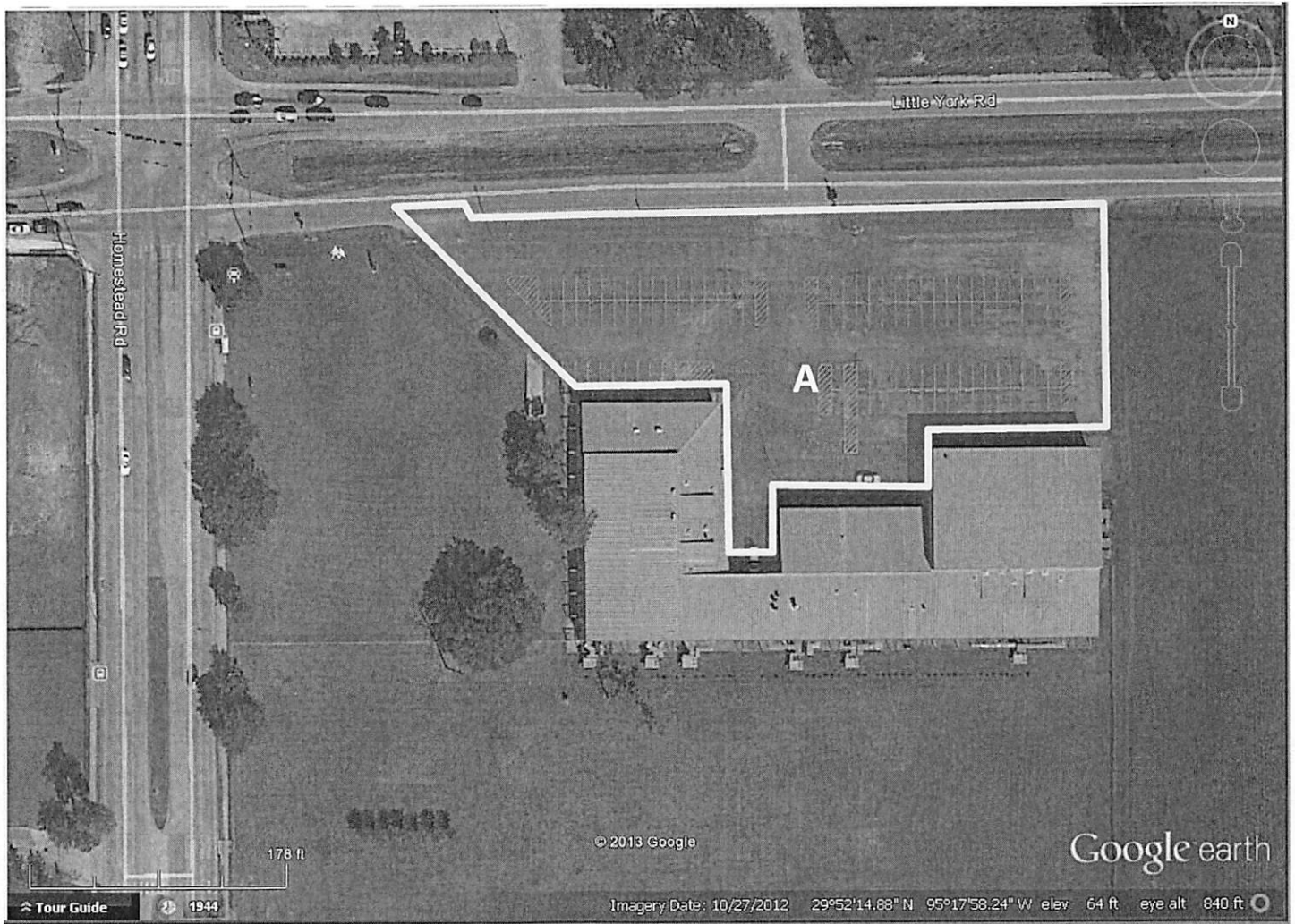
F PSI training area:
555 Community College Drive

G PSI Burn Bld parking area:
555 Community College Drive

H PSI Range parking lot:
555 Community College Drive

North Forest Campus

Map 5



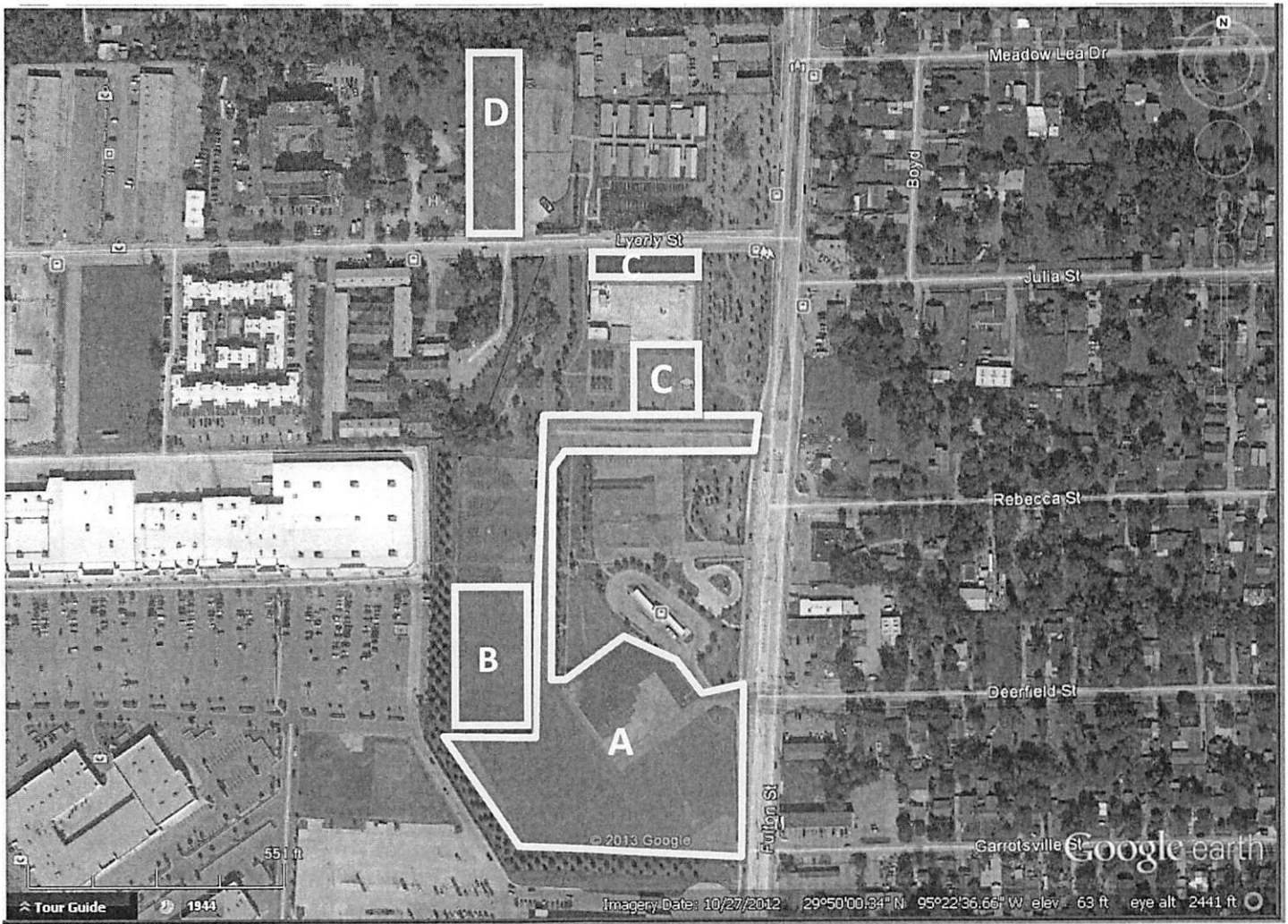
Parking areas at the HCC North Forest Campus

A Workforce parking lot:

6010 East Little York Road

Northline Campus

Map 6



Parking areas at the HCC Northeast Northline Academic Center Campus

A Northline Campus parking lot:

8001 Fulton Street

C Main building parking lot:

8001 Fulton Street

B Parking Garage:

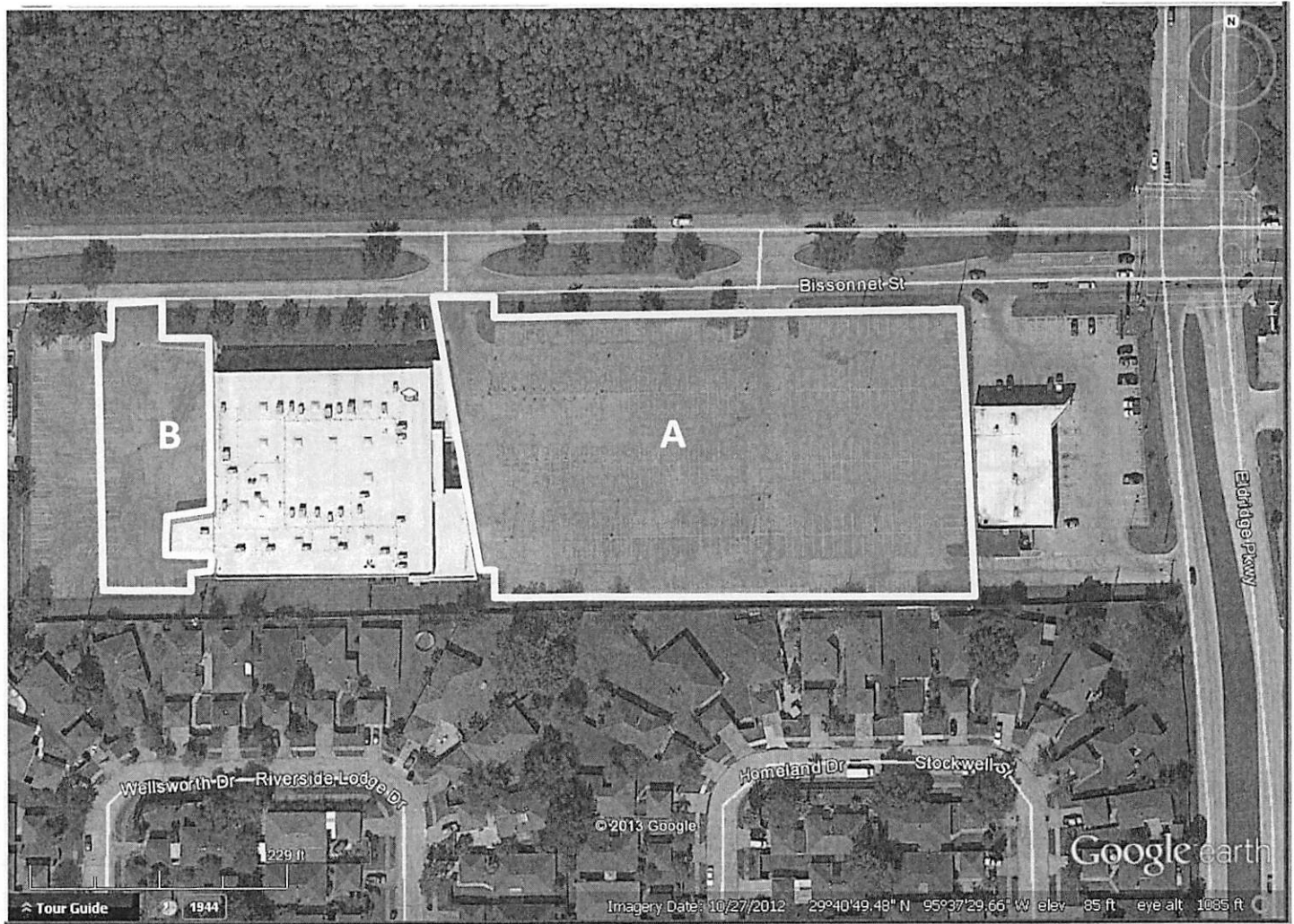
8001 Fulton Street

D Lyerly Street parking lot:

91 Lyerly Street

Alief Bissonet Campus

Map 7



Parking areas at the HCC Northwest Alief Bissonet Campus

A Main building parking lot:

13803 Bissonet Street

B Workforce building parking lot:

13803 Bissonet Street

Katy Mills Campus

Map 9

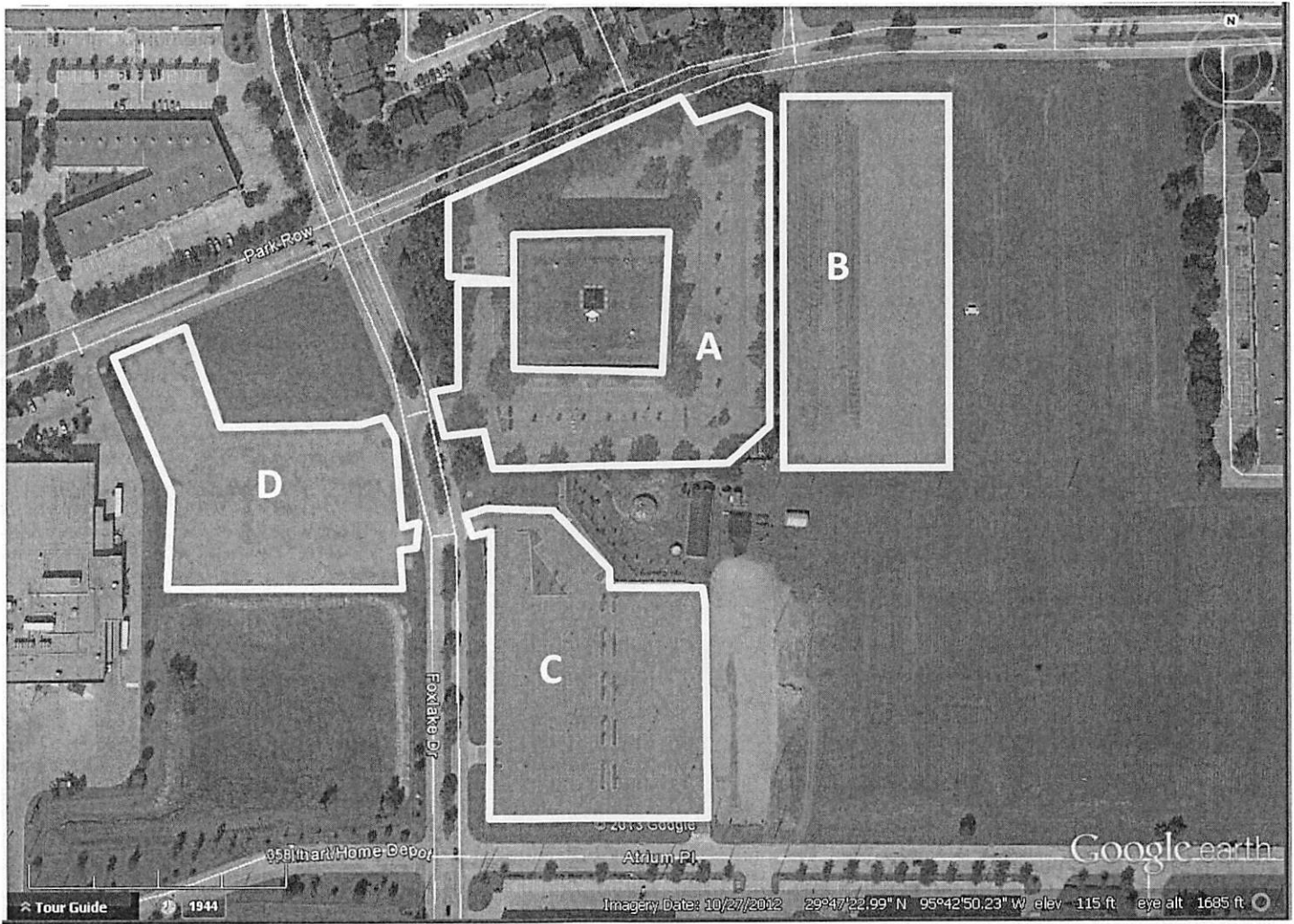


Parking areas at the HCC Katy Mills Campus

A Building parking lot:
25403 Kingsland Boulevard

Katy Campus

Map 10



Parking areas at the HCC Southwest Katy Campus

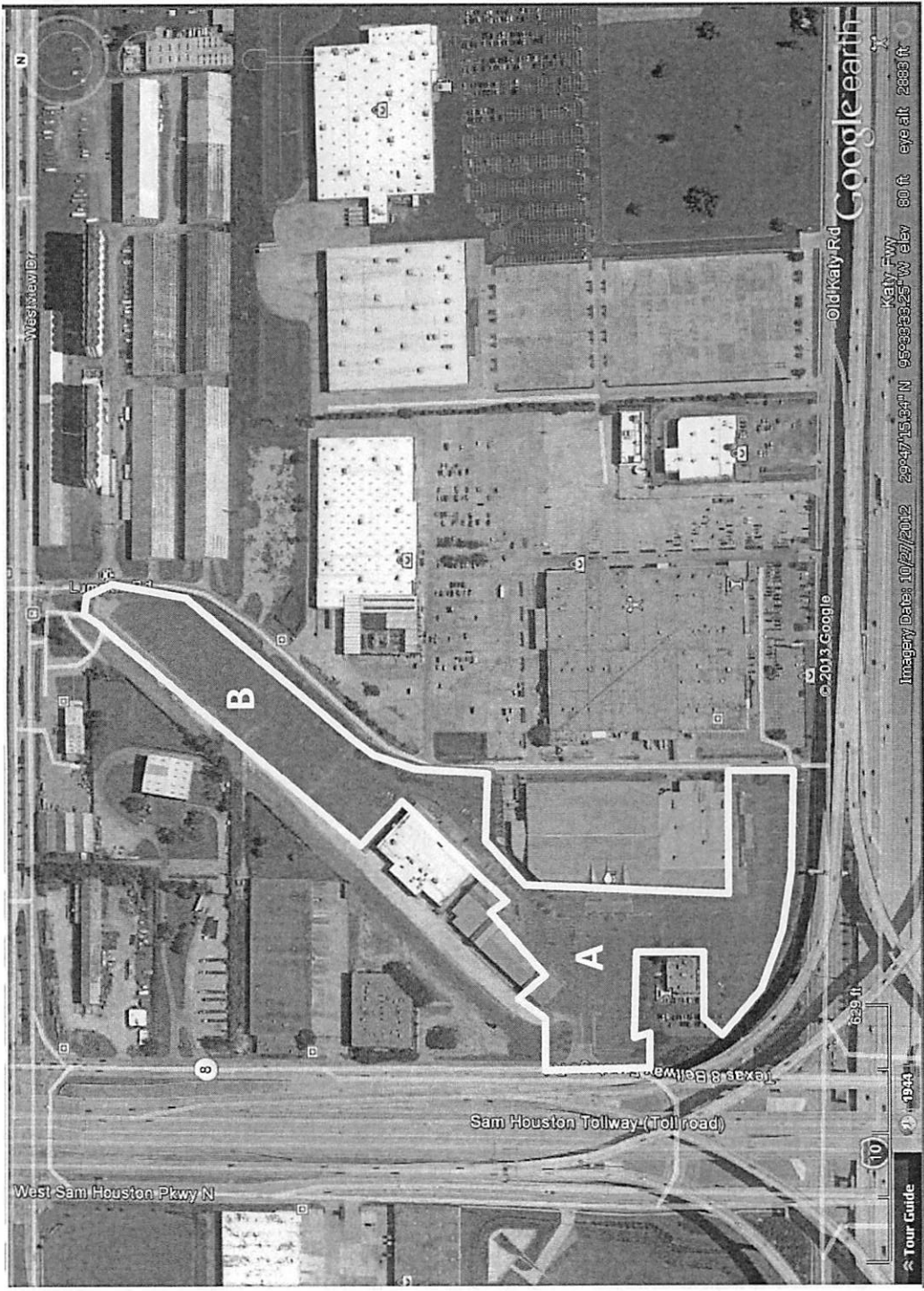
A Main building parking lot:
1550 Fox Lake Drive

C Annex parking lot:
1560 Fox Lake Drive

B Park Row parking lot:
1550 Fox Lake Drive

D Fox Lake parking lot:
1551 Fox Lake Drive

Spring Branch Campus Map 11

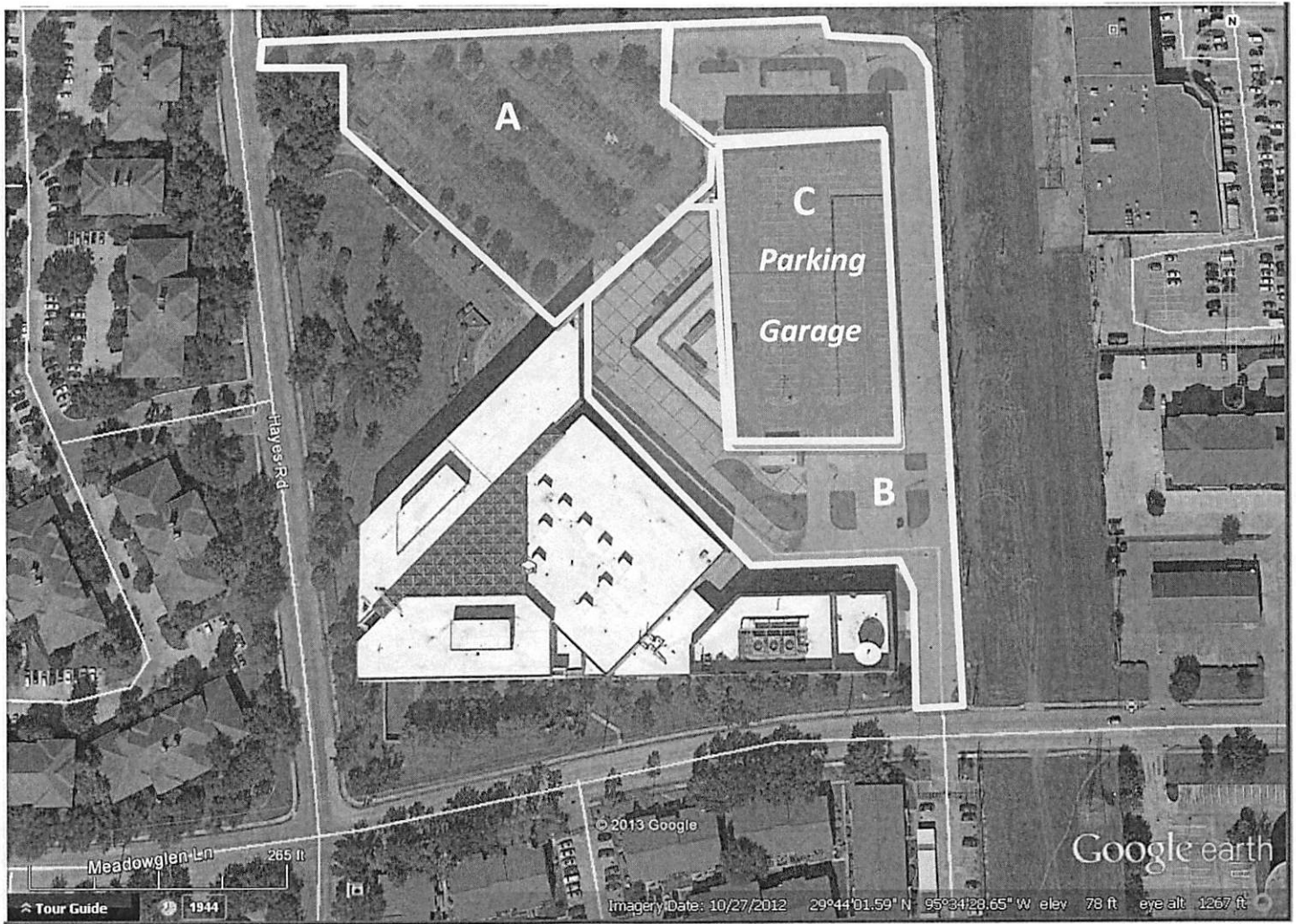


Parking areas at the HCC Spring Branch Campus

- A Main building parking lot:
1010 West Sam Houston Parkway, exclude retail lots
- B Performing Arts building parking lot:
1010 West Sam Houston Parkway

Alief Campus

Map 12



Parking areas at the HCC Alief Campus

A Alief Hayes parking lot:

2811 Hayes Road

B Alief Early College parking lot:

2811 A Hayes Road

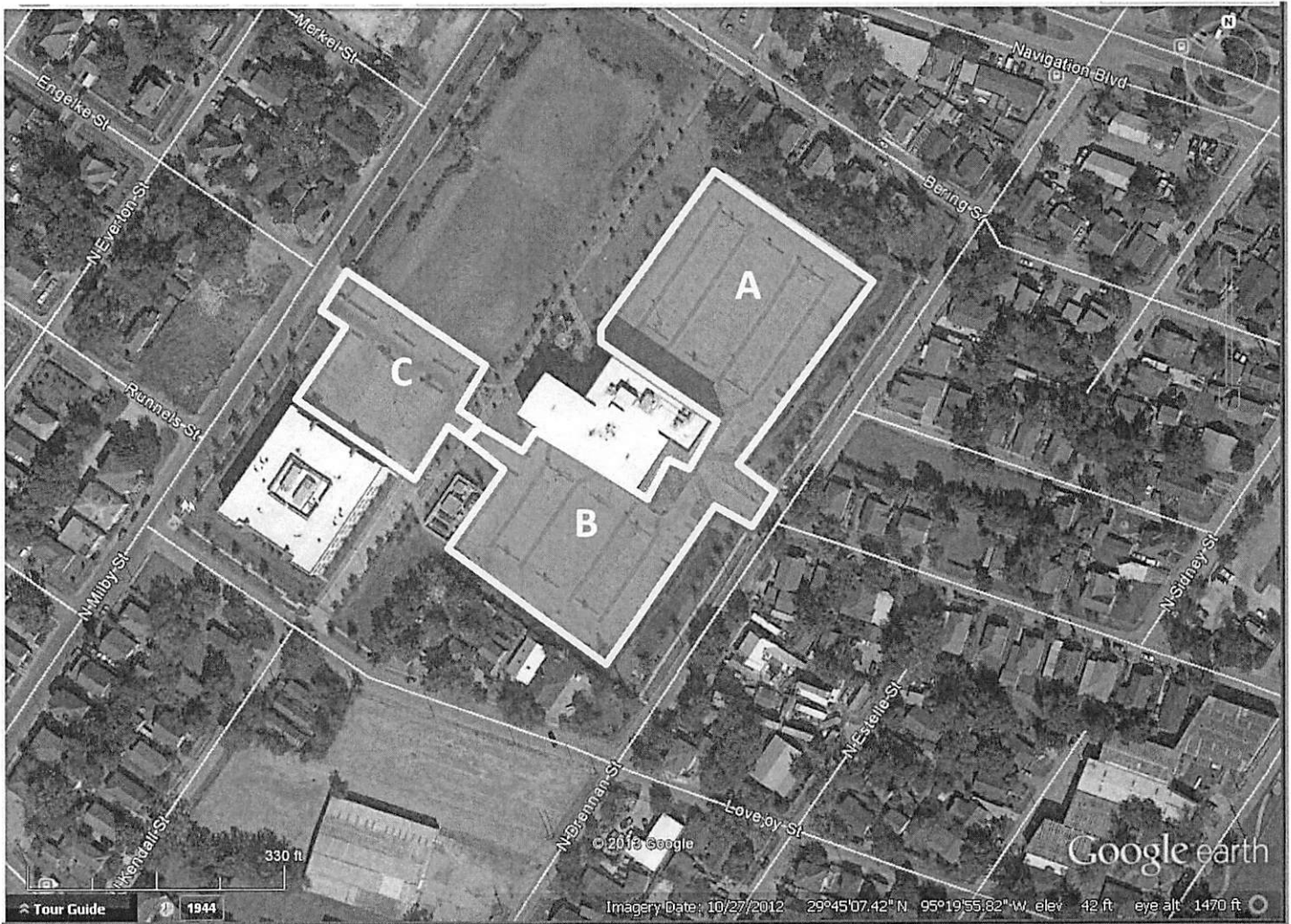
C Alief Early College Parking Garage:

2811 A Hayes Road

Five (5) level garage

Felix Fraga

Map 13



Parking areas at the HCC Southeast Felix Fraga Campus

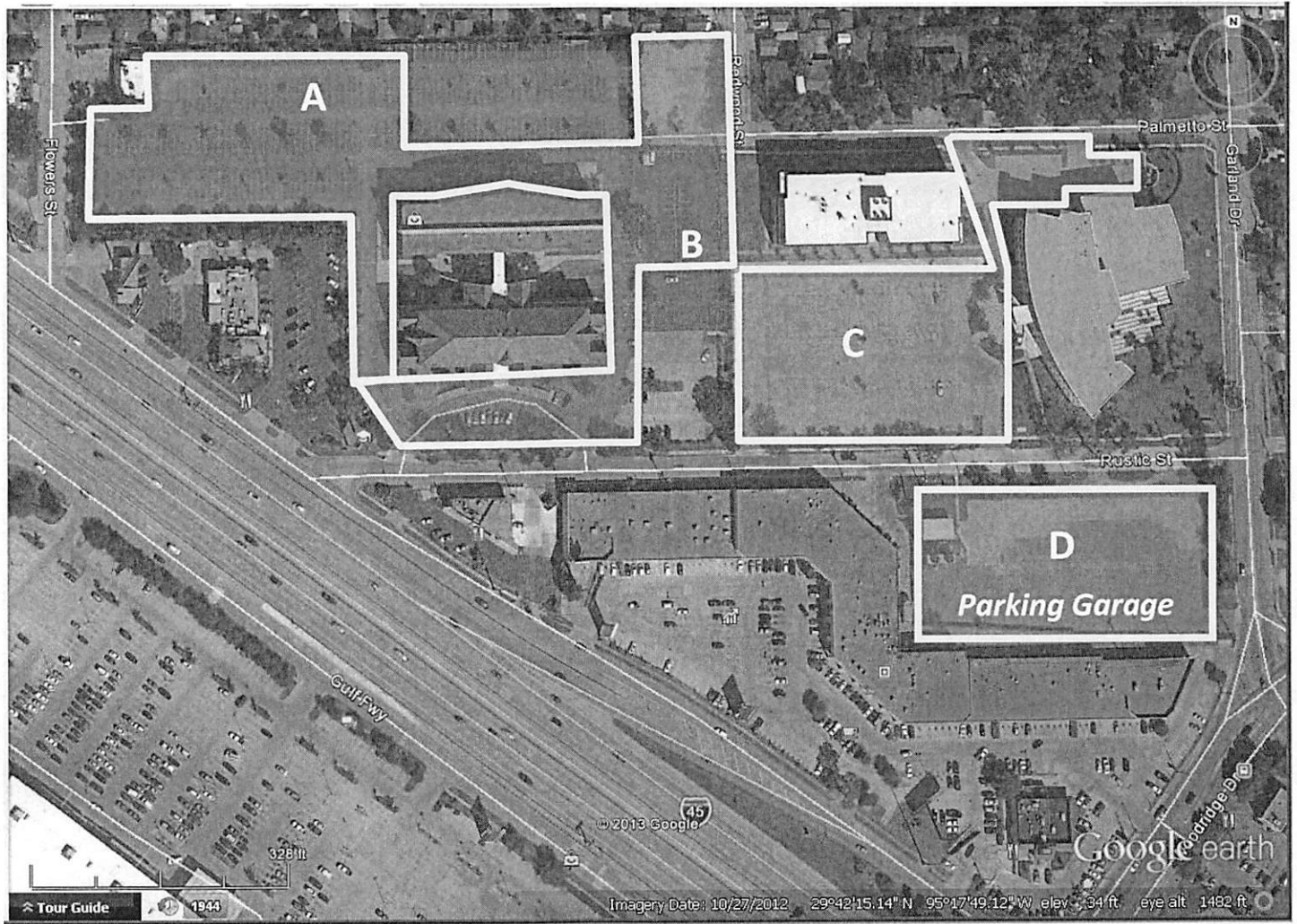
A Main building north parking lot:
301 North Drennan Street

B Main building south parking lot:
301 North Drennan Street

C Early College parking lot:
220 North Milby Street

Southeast Campus

Map 14



Parking areas at the HCC Southeast Campus

A Angelia Morales buildings parking lots:

6816 Rustic Street

B Felix Morales building parking lot:

6816 Rustic Street

C Workforce and SELH building parking lot:

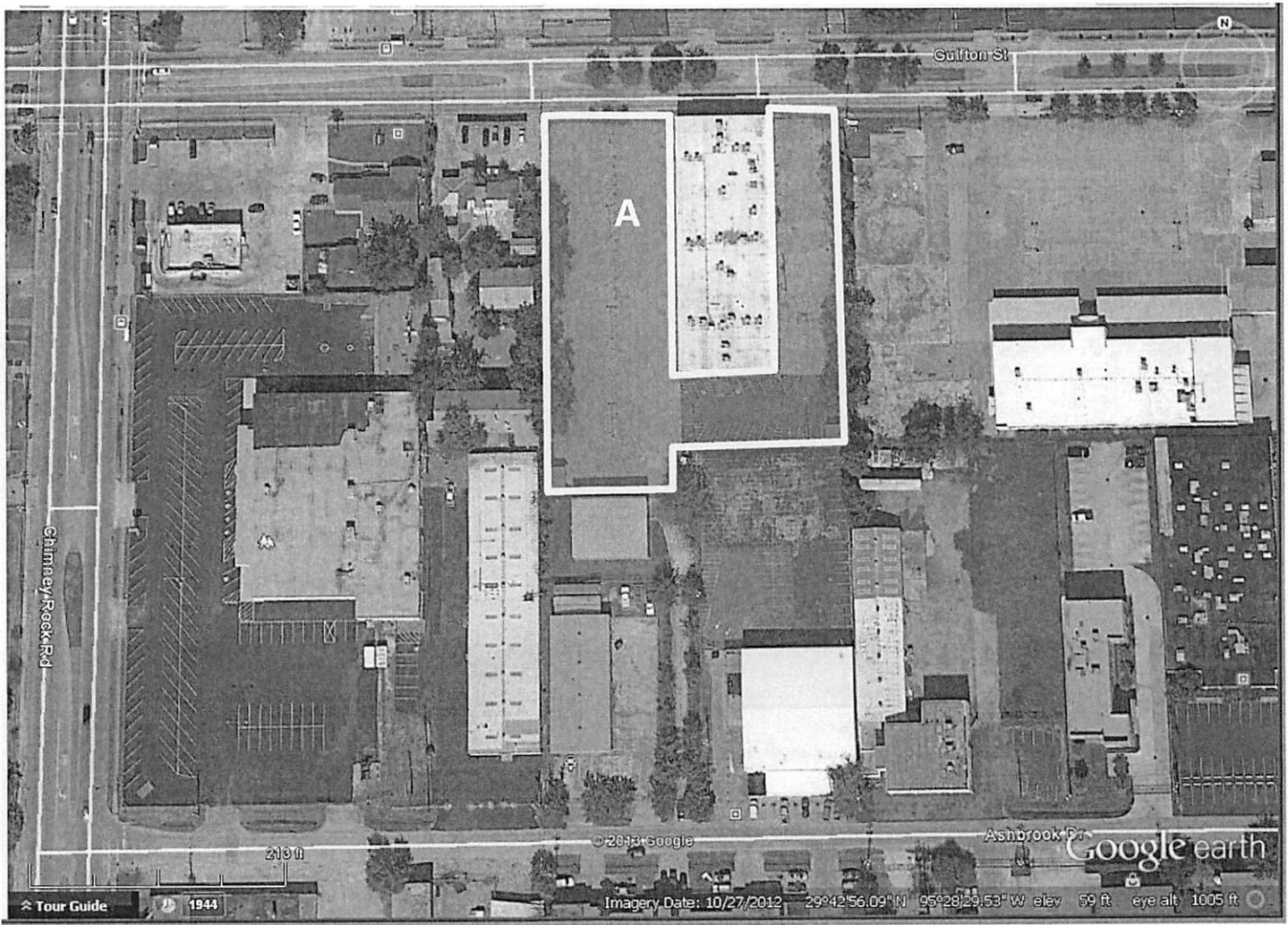
6815 Rustic, Building E

D Parking Garage: Five (5) Level garage

2524 Garland

Gulfton Campus

Map 15

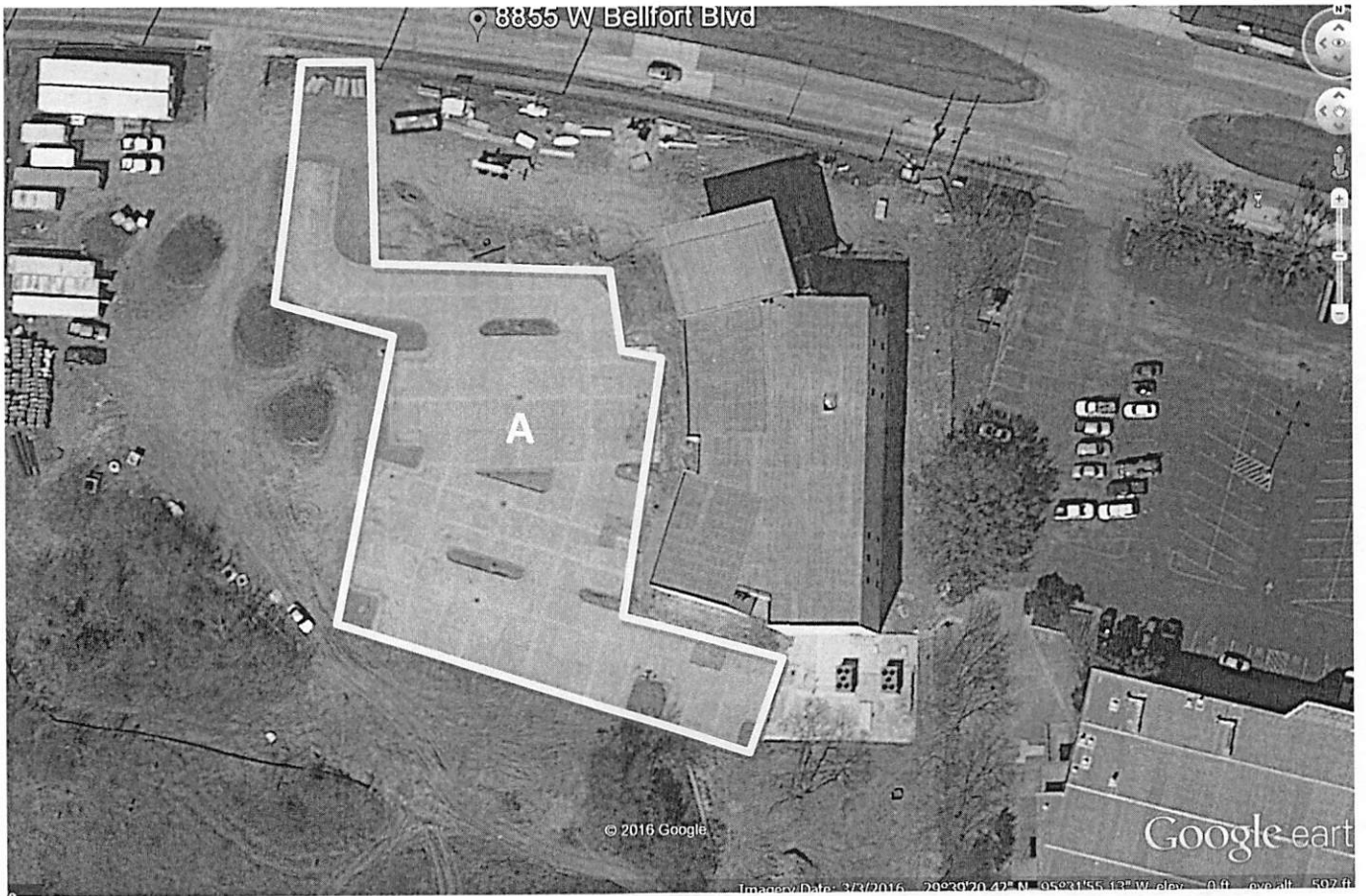


Parking areas at the HCC Southwest Gulfton Campus

A Main building and adjacent rear parking lot:
5407 Gulfton Drive

Southwest Brays Oaks

Map 16

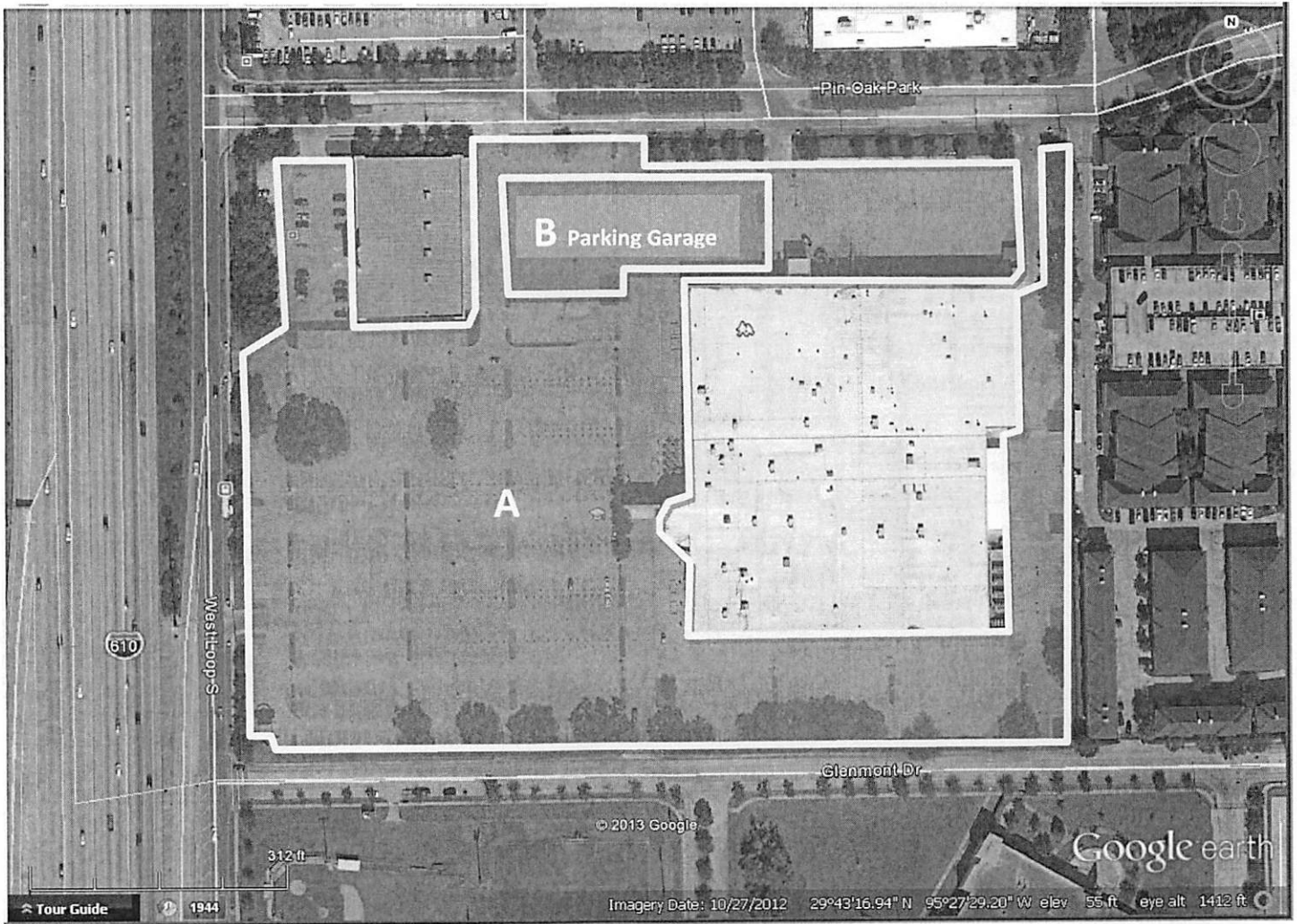


Parking areas at the HCC Southwest Brays Oaks Campus

A Main building parking lot:
8855 W. Belford St.

Southwest Loop Campus

Map 17



Parking areas at the HCC Southwest West Loop Campus

A Main building parking lot:

5601 West Loop South

B Main building Parking Garage:

5601 West Loop South

Stafford Campus

Map 18



Parking areas at the HCC Southwest Stafford Campus

A Scarcella Science / Tech parking lot:
10141 Cash Road

B SW Learning Hub north parking lot:
10041 Cash Road

C SW Learning Hub south parking lot:
10041 Cash Road

D SW Learning Hub annex parking lot:
10041 Cash Road

E Fine Arts building parking lot:
9910 Cash Road

F Work Force building parking lot:
13622 Stafford Road

INVITATION FOR BID
PROJECT NO. RFP 17-24
PARKING LOT & PARKING GARAGE CLEANING SERVICES

QUESTIONS AND ANSWERS NO. 1

Date: January 20, 2017
To: Prospective Proposers
From: Procurement Operations Department, Houston Community College
Subject: Questions and Answers Responses

1. What is the correct proposal submittal due date?

Response: February 7, 2017, 2:00PM. (See Amendment No. 2)

2. Are contractors allowed to use the water on property to fill pressure washing tanks? Are there supply lines for accessing the water for pressure washing?

Response: Yes, vendor will need to provide their own hose, if needed.

3. Will HCC provide site visit schedule or independently scheduled?

Response: No scheduled site visits.

4. Is City permitting required for pressure washing?

Response: Yes, follow the City Code guidelines for pressure washing. If, per City Code it is a requirement then vendor must abide and get permit themselves.

5. What part of the vehicle ramp area needs to be cleaned?

Response: Exit/Entrance ramps to parking garages and loading dock area only.

6. Will the custodial services have access to the parking garage area?

Response: Custodial services police the parking lots/garages once a day.

7. Do you have specification for the trash liners?

Response: No specific liner, prefer a heavier duty than something "thin" that will break.

8. Can a sweeper company dump contents of material swept up at HCCS dumpsters?

Response: We currently have 7 Slant trash bins provided at various locations that are used for this purpose – sweeper is able to dump contents in the "Slant" bins. List of bins will be provided once contract is awarded.

9. Who is incumbent? If presently none, who was last company that held a contract and who is present temp vendor for seeping and power washing?

Response: The last Company that held contract was E&W Diversified.

10. When was the last time the areas specified in the RFP were power washed? Especially the lobby areas and stairwells of garages?

Response:

Power washing was last done:

3100 Main / Jan. 2017

Central / Aug 2016

Hayes Rd. / Aug 2016

Southeast / Aug 2016

Southwest / Aug 2016

Northeast / July 2016

11. Will the awarded contractor of bid get free access cards to enter garages?

Response: All of our "parking garages" at this time are open access, especially after 5 PM.

12. Please specify all the designations that you accept as minority, woman owned, small business or disadvantaged businesses? Example MBE, etc.

Response: HCC expanded the list of currently accepted certifications to also include the City of Houston MBE (minority), WBE (women), PDBE (person with disabilities) and DBE (disadvantaged). This is in addition to the SBE certifications for the City of Houston, Metropolitan Transit Authority of Harris County (METRO), Texas Department of Transportation, City of Austin, South Central Texas Regional Certification Agency and Small Business Administration 8(a).

Reference HCC's SBE link below;

<http://www.hccs.edu/district/departments/procurement/small-business-procurement/>

14. In the Pre-bid meeting, we understood you to say that we must have certifications in Houston. We have certifications from the state of Texas HUB and South Central Texas Regional Certification Authority as a small, emerging, minority business. Can you please clarify if certifications must be from Houston or if these certifications will suffice? If, NOT, please name the certifications that you are requiring?

Response: HCC does not recognize the Texas HUB certification. We recently expanded the list of currently accepted certifications to also include the City of Houston MBE (minority), WBE (women), PDBE (person with disabilities) and DBE (disadvantaged). This is in addition to the SBE certifications for the City of Houston, Metropolitan Transit Authority of Harris County (METRO), Texas Department of Transportation, City of Austin, South Central Texas Regional Certification Agency and Small Business Administration 8(a).

Reference HCC's SBE link below;

<http://www.hccs.edu/district/departments/procurement/small-business-procurement/>

15. In the pre-bid meeting, there was mention of some details in the **Parking Garage, Map 14, Site C**, could you clarify what you mentioned about this location?

Response: See REVISED Map No. 14; Change was made reflecting Site B on map not Site C. (See Amendment No. 2)

16. Is there any place for the protection of our equipment that can assign, rent or provide HCC?

Response: No equipment is to be left at any HCC location.

17. In the pre-bid meeting, there was mention that the references needed to be in Houston, is this mandatory or can they also be in other areas?

Response: References can be from anywhere within the Continental US.

18. How many feet around the elevator need to be pressure washed?

Response: Up to 20 ft. of the perimeter of all elevator and stairwell entrances, with care of any ground stripping in the area.

19. It is clear that there are 57 Parking Lots exist but can you clarify if there are 4 or 6 garages?

Response: 6 Parking Garages total.

20. Please provide a contact list of campus managers at each site.

Response: Yes, see the list below.

Balance of page intentionally left blank.

**HOUSTON COMMUNITY COLLEGE
CAMPUS MANAGERS**

CAMPUS	ADDRESS (PRIMARY)	CONTACT PERSON	PHONE NUMBER
District			
System (District Bldg.)	3200/3100/3000 Main	Betty Brown	713-718-7577
Warehouse	9424 Fannin	Victor Camargo	713-718-2305
Warehouse	1102 Delano	John Robertson	713-718-7576
Central College			
Central	1300 Holman	Debra Robinson	713-718-2703
Central	All buildings	Keffus Falls	713-718-6615
Willie Gay Hall	1990 W. Airport Blvd.	Charles Whigham	713-718-6637
Coleman			
Coleman	1900 Pressler	Sandra Roman	713-718-7483
Northeast College			
Codwell	555 Community College Dr.	Dr. Abe Bryant	713-718-2169
Northline	8001 Fulton	Raul Ortegon	713-718-8007
Automotive Technology	4638 Airline Dr.	Raul Ortegon	713-718-8007
Pinemont	1265 Pinemont Dr.	Jacqueline Joseph Howard	713-718-8107
North Forest	6610 Little York	Michael Frazier	713-718-5795
Southeast College			
Eastside	6815 Rustic St.	Maria Dolores Rios	713-718-2776
		James Holley	713-718-7202
Felix Fraga	301 N Drennan St.	Paul Patterson	713-718-2776
Southwest College			
Gulfton	5407 Gulfton Dr.	Andrew Johnson	713-718-2902
Stafford LHUB	10041 Cash Rd.	Tyrone Cross	713-718-6702
Scarcella	10141 Cash Rd.	Tyrone Cross	713-718-6702
Fine Arts Bldg.	9910 Cash Rd.	Tyrone Cross	713-718*6702
Stafford Workforce	13622 Stafford Rd.	Tyrone Cross	713-718-6702
West Loop	5601 West Loop South	Mark Lambert	713-718-7870
Brays Oaks	8855 W. Bellbord	Lillie McIntyre	713-7188647
Northwest College			
Spring Branch	1010 W. Sam Houston Pkwy.	Hernan Segovia	713-718-5417
Katy Campus	1550 Fox Lake Dr. /	Trenise Sexton	713-718-5753
Alief Hayes Rd.	2811 Hayes Rd.	Jane Perez	713-718-6911
Alief Continuing Ed.	13803 Bissonet St.	Readri Epps	713-718-5348
AREA MANAGERS			
John Robertson	Central / 3100 Main/Warehouse		214-543-1456
Jesse Patrick	Southwest/ Coleman/ North Forest/ Willie Lee Gay Hall		713-539-3088
Faybian Pierre	Northeast / Southeast		713-539-3152
Cecil Martin	Northwest / Felix Fraga		832-594-9646

When issued, "Questions & Answers" shall automatically become a part of the solicitation documents and shall supersede any previous specification(s) and/or provision(s) in conflict with the Questions & Answers. All revisions, responses, and answers incorporated into the Questions & Answers are collaboratively from both the Procurement Operations and the applicable HCC Department(s). It is the responsibility of the bidder/respondent to ensure that it has obtained all such letter(s). By submitting a bid on this project, bidders/respondents shall be deemed to have received all Questions & Answers and to have incorporated them into this solicitation and resulting proposal response.

Furthermore, it is the responsibility of each Contractor to obtain any previous Questions & Answers associated with this solicitation.

Balance of page intentionally left blank.