



Houston Community College System

HCCS-Construction Department
3100 Main, 12th Floor
Houston, Texas 77002
Voice: 713.878.5188
eyvaldo.pradia@hccs.edu



Issue:
1/ 02-2012 ISSUE FOR BIDS
02-26-2012

llewelyn-davies sahni
architectural + planning + design
5120 Woodway, Suite 8810
Houston, TX 77056
Tel: 713.850.1100
F: 713.850.1023
e: info@hdsahni.com

ENVIRONMENTS

ARCHITECTURE • INTERIORS • LANDSCAPE • PLANNING
281.292.1913 P
www.hdsahni.com

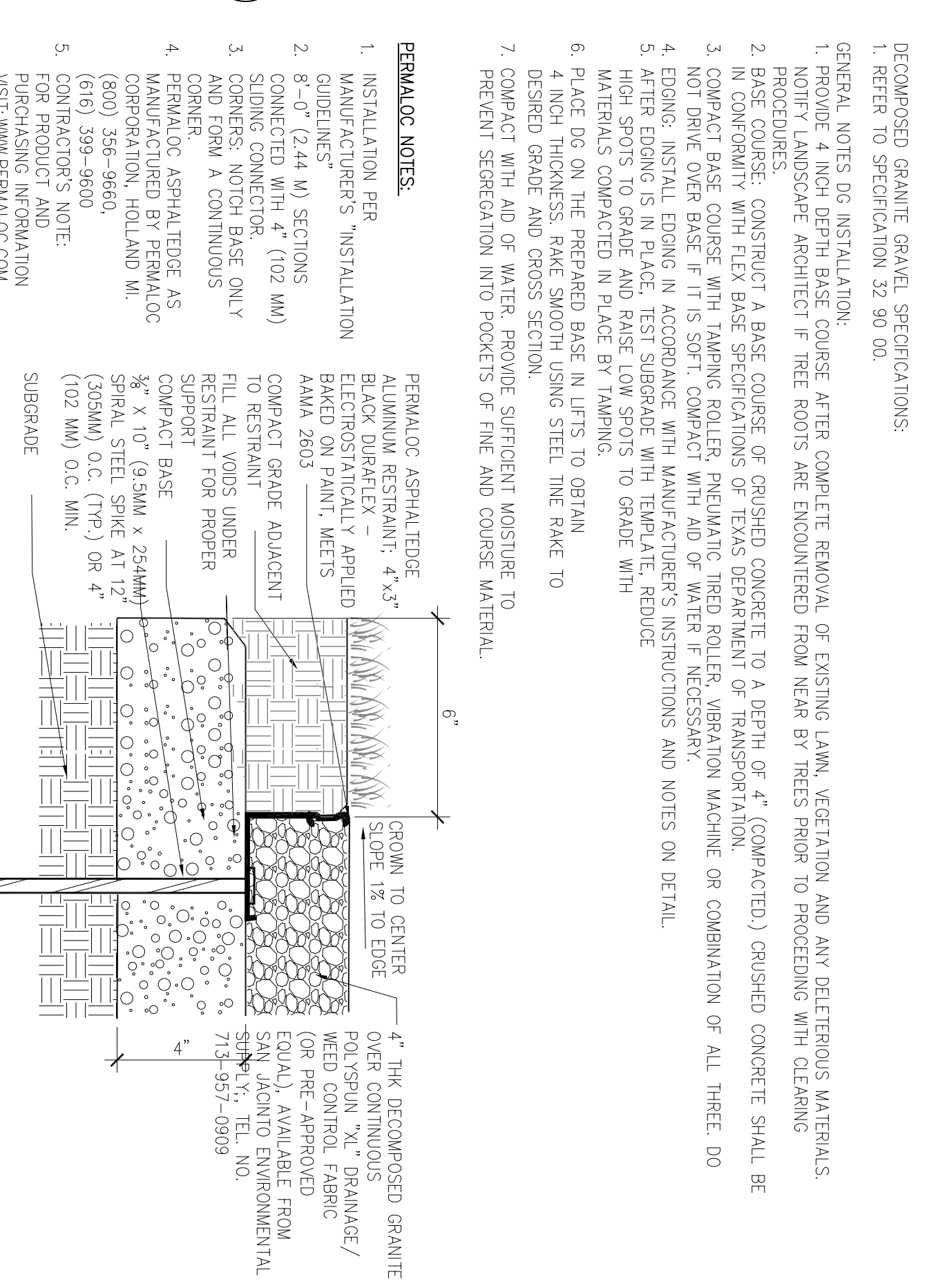
Southeast Campus Infrastructure

6815 Rustic Ln.
Houston, TX 77087

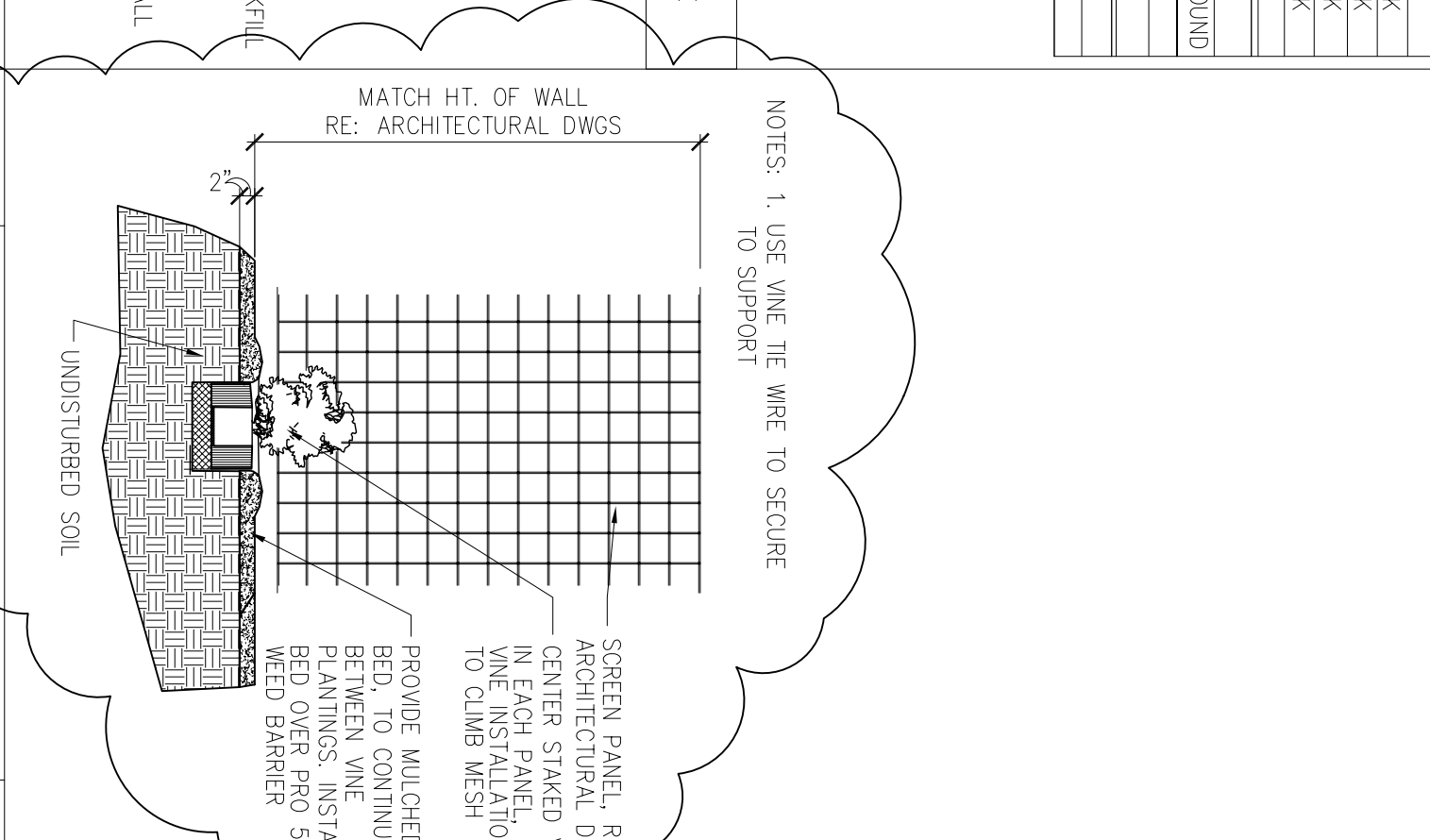
HCCS Project No.: 771
A/E Project No.: CLP
Drawn By: MSM
Checked By: MSM
CAD File:

LANDSCAPE PLAN, PLANT SCHEDULE AND DETAILS

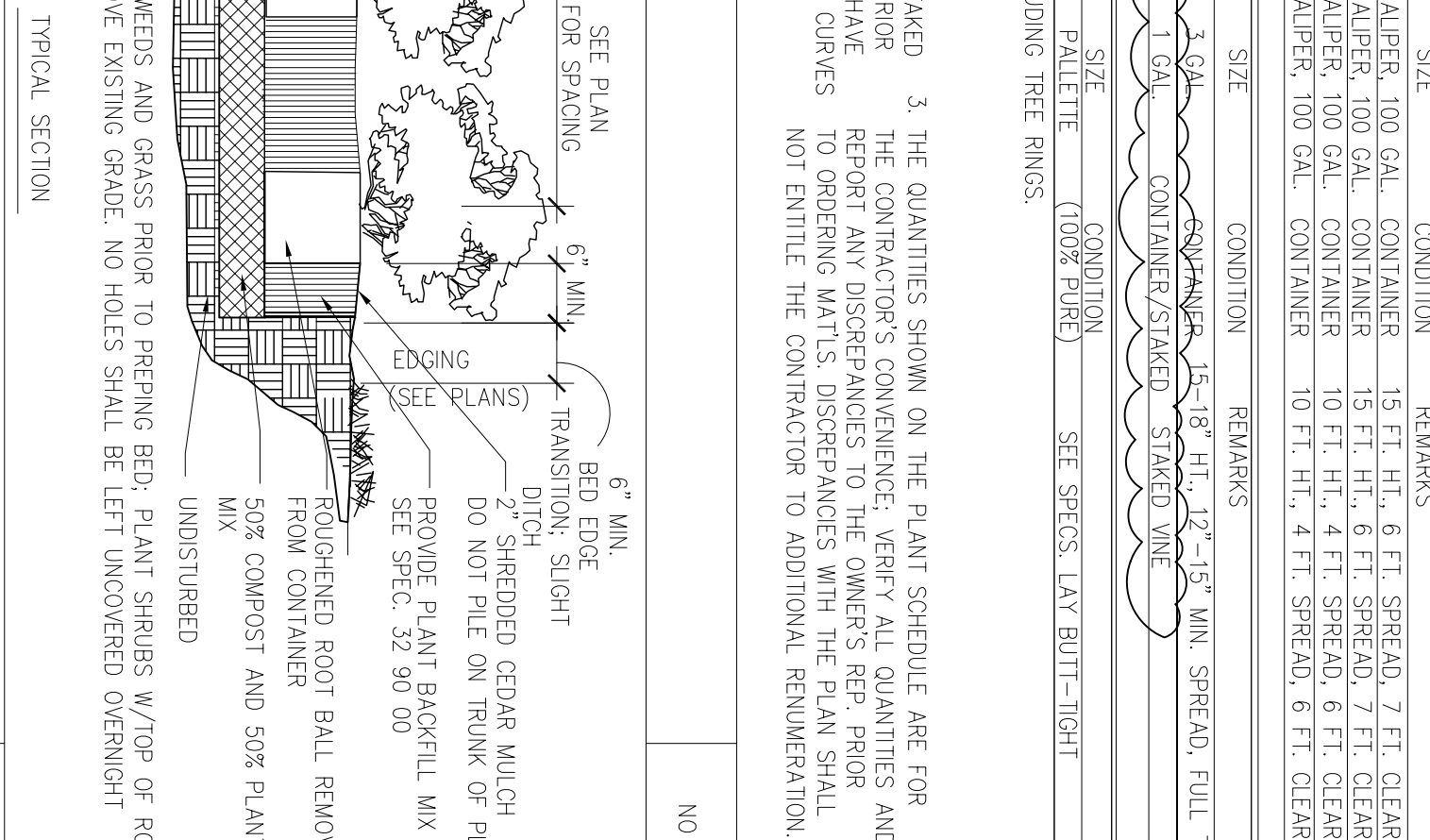
Scale: As Noted
L1.00



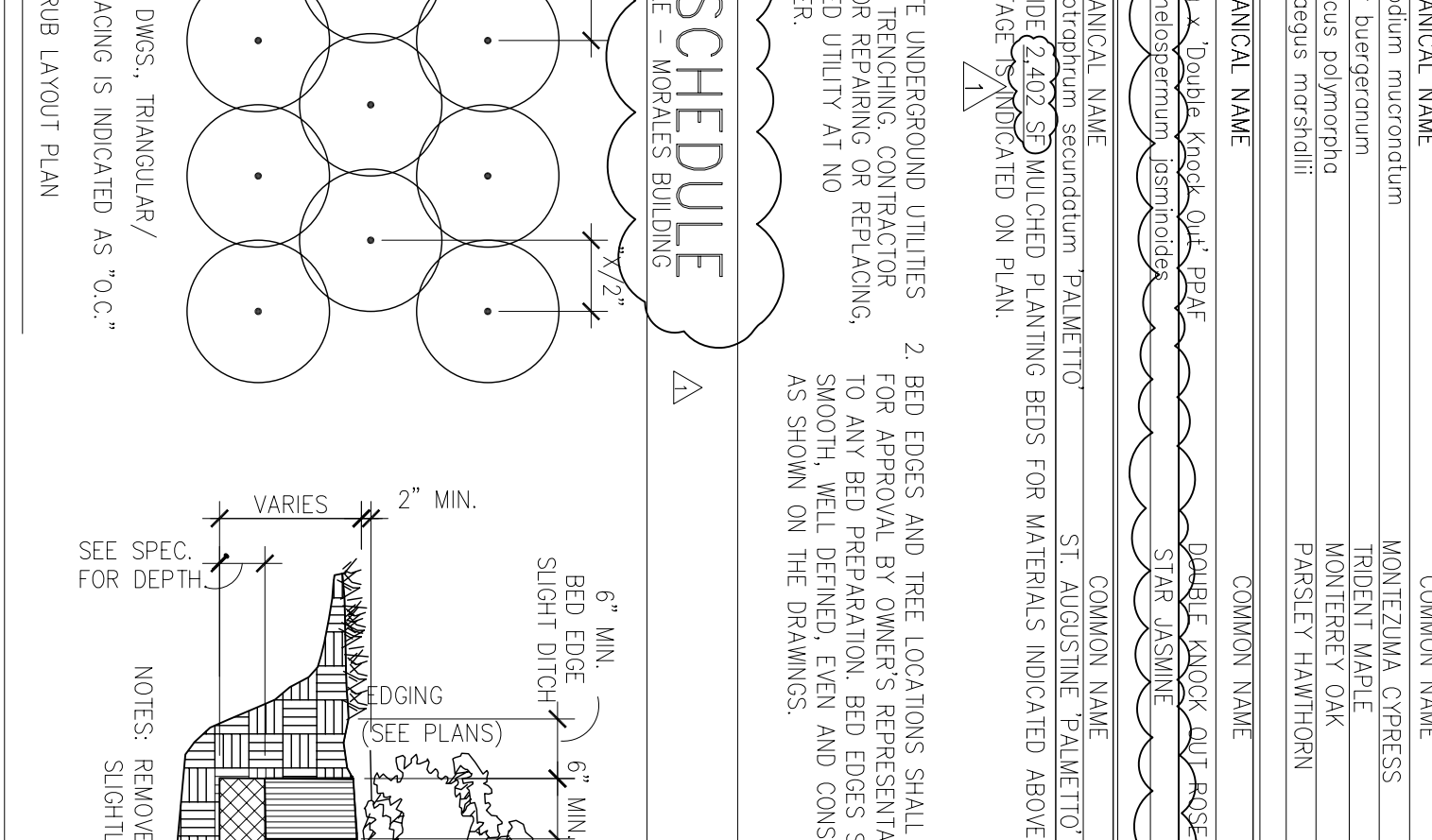
G5 EDGE DETAIL AT DG
NO SCALE



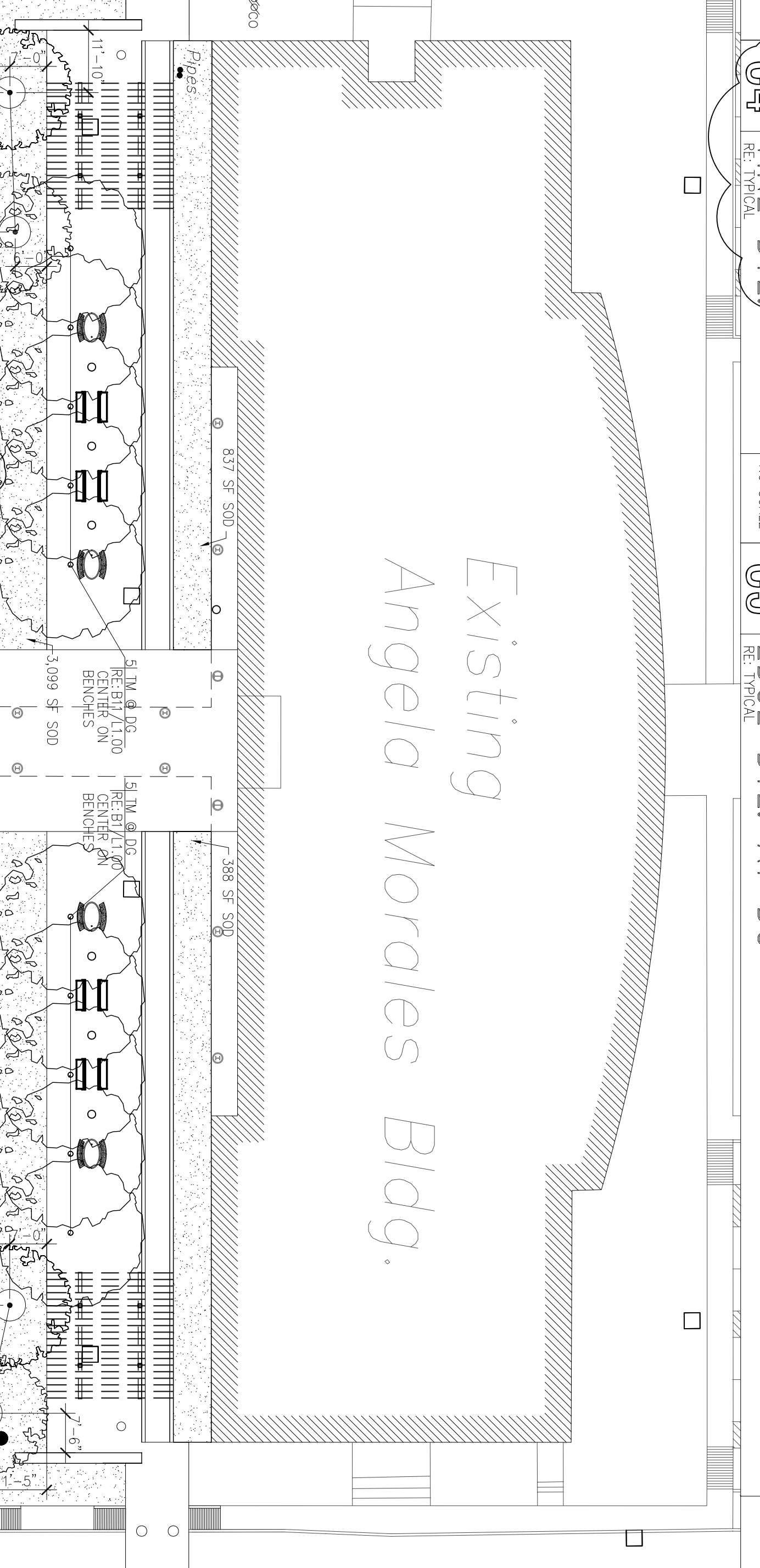
G4 VINE DETAIL
NO SCALE



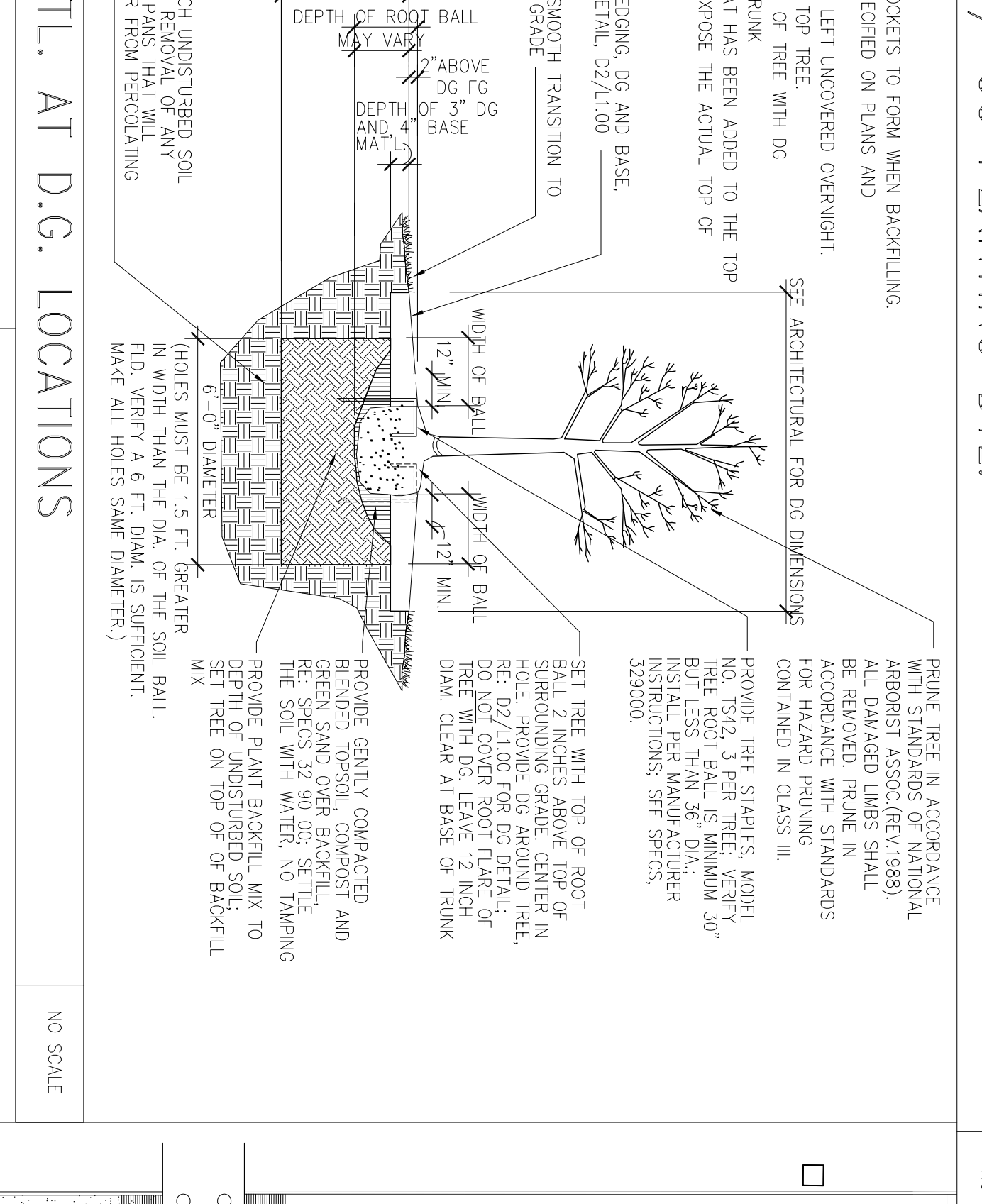
G2 TYP. SHRUB / GC PLANTING DETAIL
NO SCALE



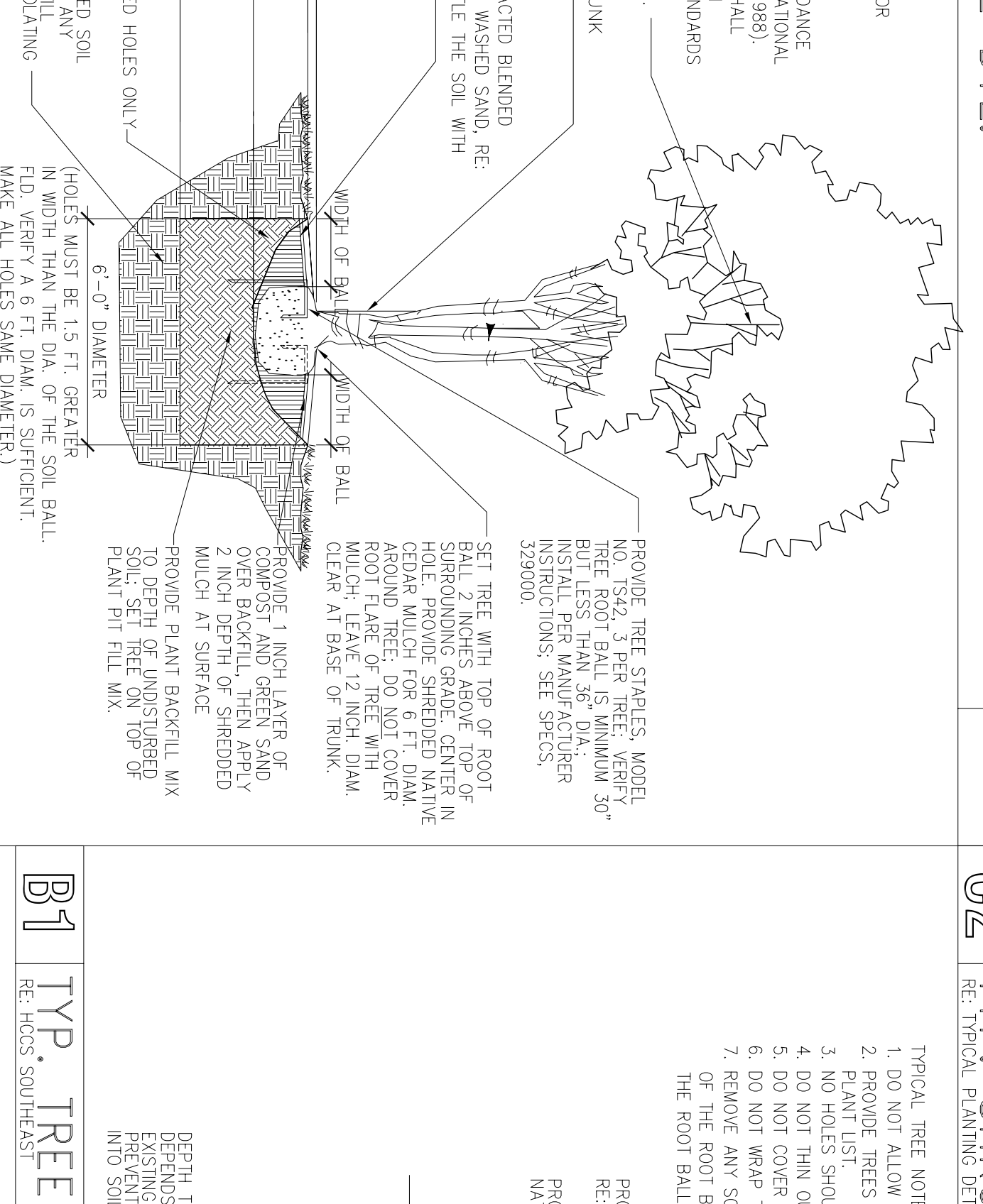
D2 PLANT SCHEDULE
RE PLANT SCHEDULE - WORKERS BUILDING
NO SCALE



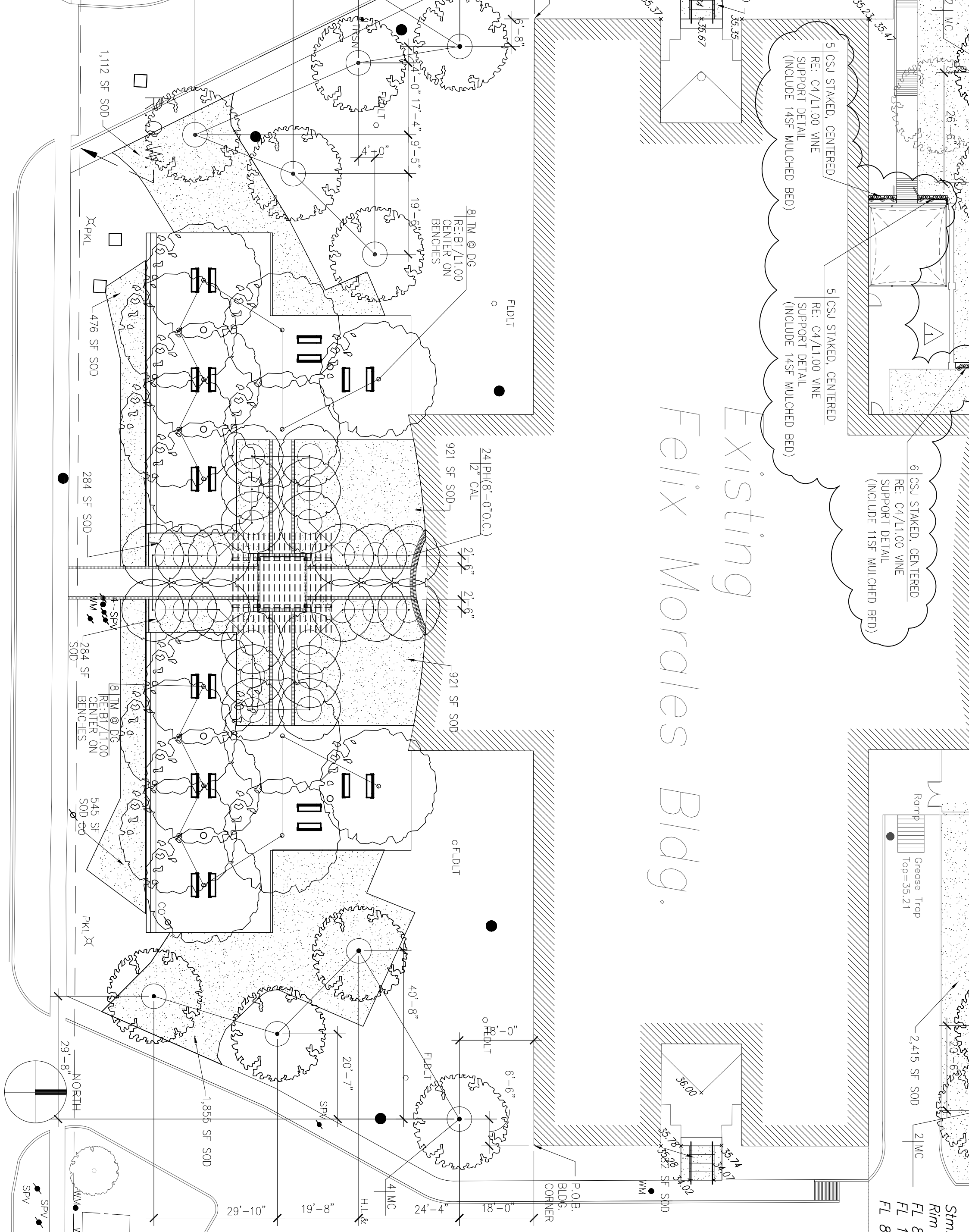
B1 TYP. TREE DETAIL AT D.G. LOCATIONS
NO SCALE



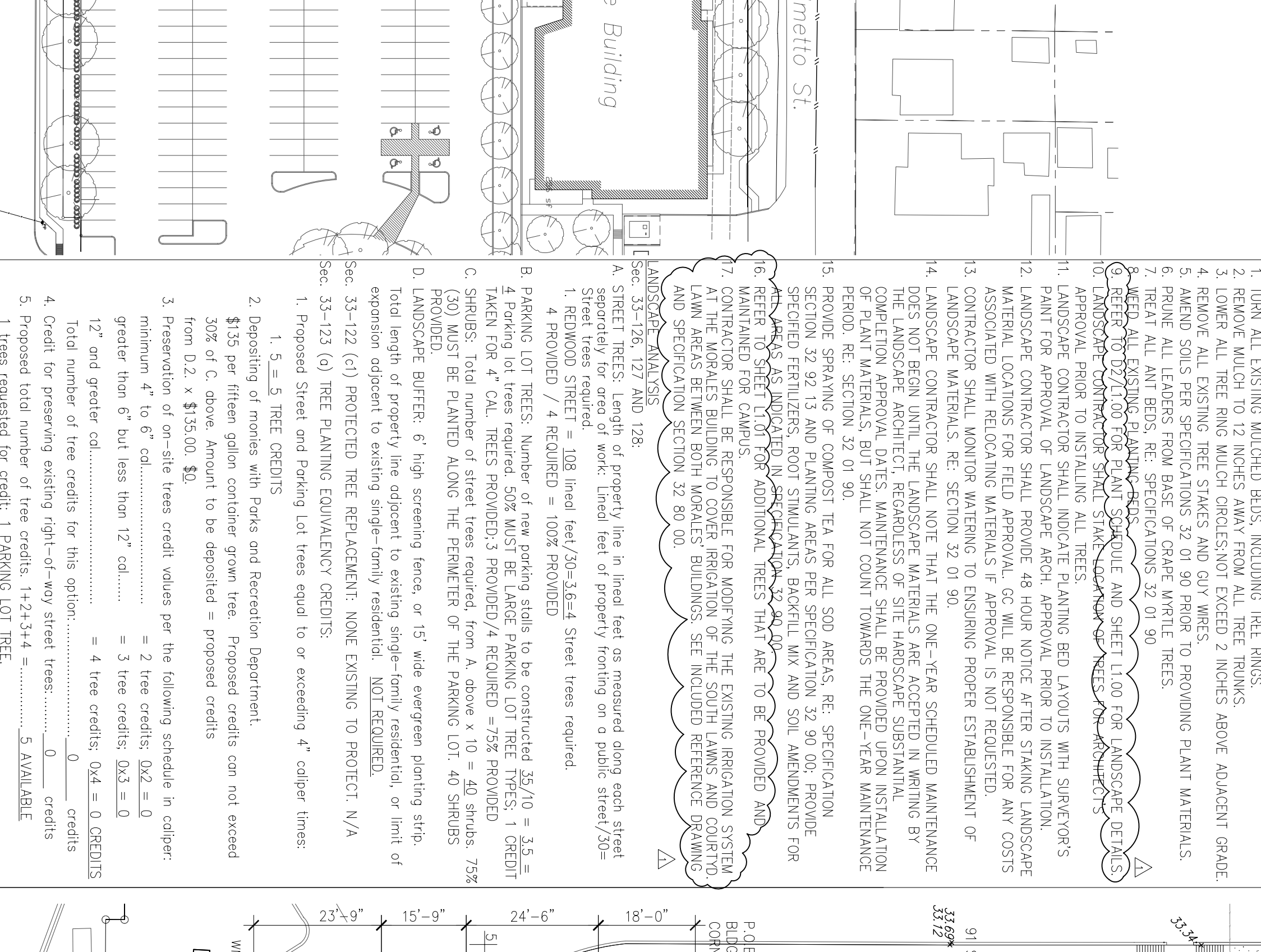
B2 MUTI-TRUNK TREE DETAIL
NO SCALE



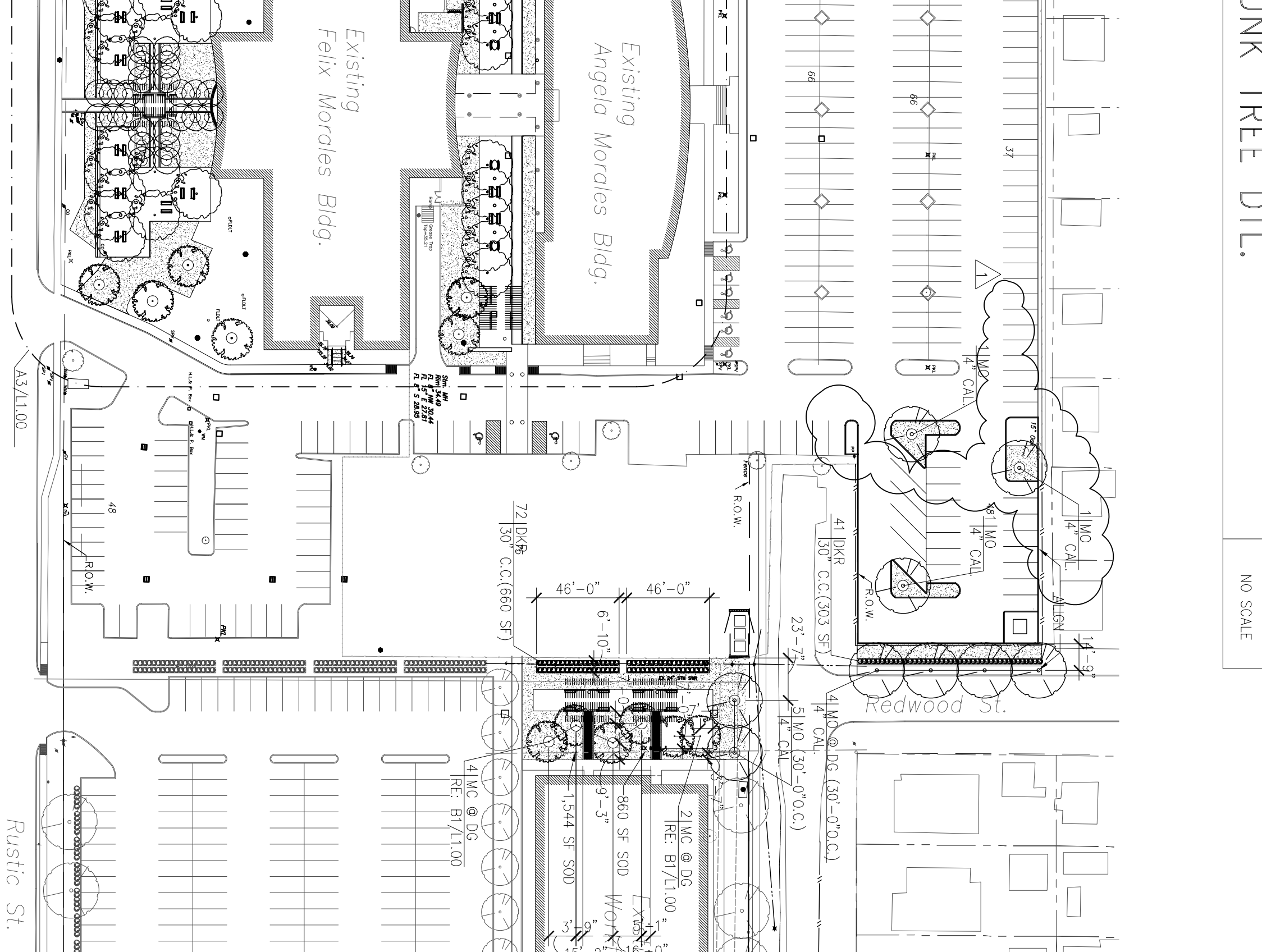
G1 TYP. TREE DETAIL
NO SCALE



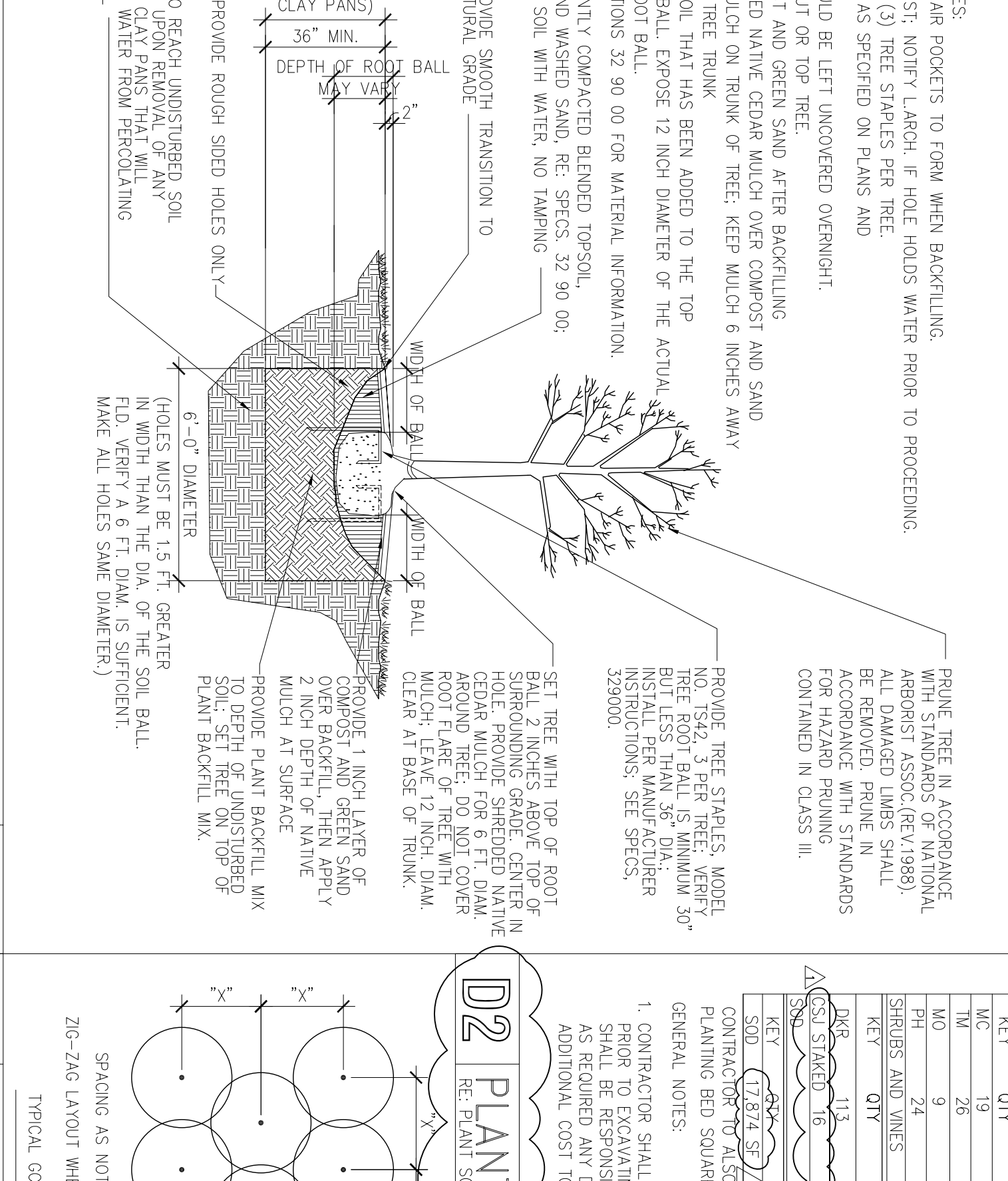
A4 PARTIAL ENLARGED LANDSCAPE PLAN
NO SCALE



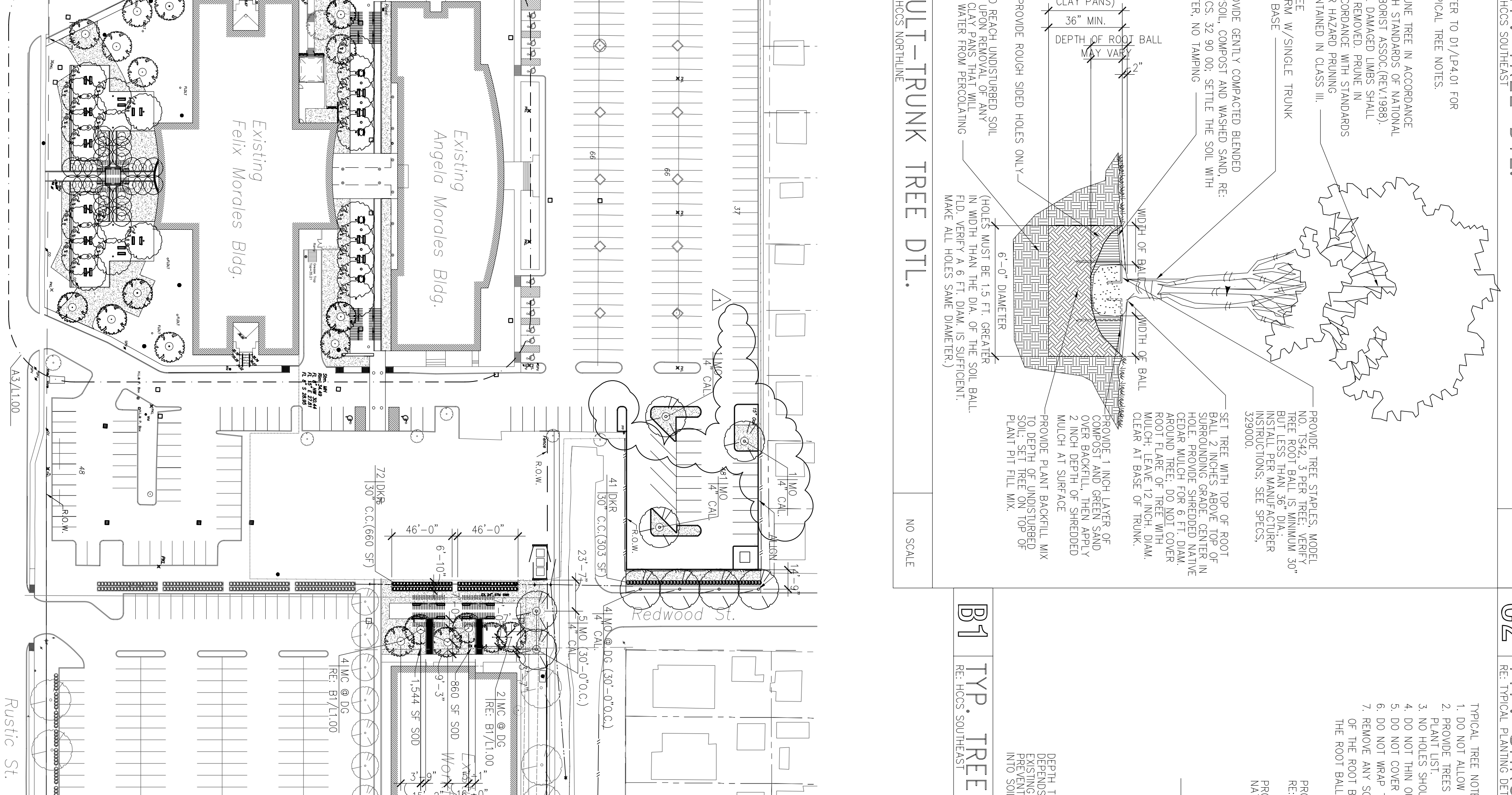
A3 NOTES AND ANALYSIS
NO SCALE



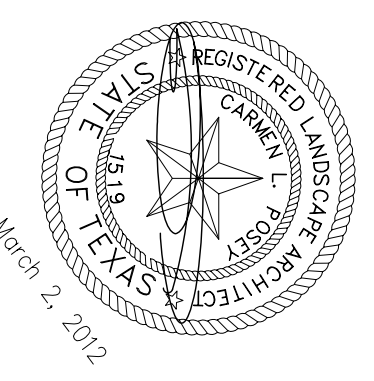
A1 LANDSCAPE SITE PLAN
NO SCALE



D1 TYP. TREE DETAIL
NO SCALE



B3 GENERAL BRANDING / LANDSCAPE NOTES
NO SCALE



Issue:

1) 01-02-2012 ISSUE FOR BIDS
03-26-2012

llewellyn-davies sahn
architectural • planning • design
5120 Woodway, Suite 8810
Houston, TX 77056
Tel: 713.850.1500
F: 713.850.1023
e: info@lhdsd.com

ENVIRONMENTS, ACO
ARCHITECTURE • INTERIORS • LANDSCAPE • PLANNING
281.295.1913
281.295.1912

**Southeast Campus
Infrastructure**

6815 Rustic Ln.
Houston, TX 77087

HCCS Project No.: 771
A/E Project No.: CLP
Drawn By: MSM
Checked By: MSM
CAD File: ...

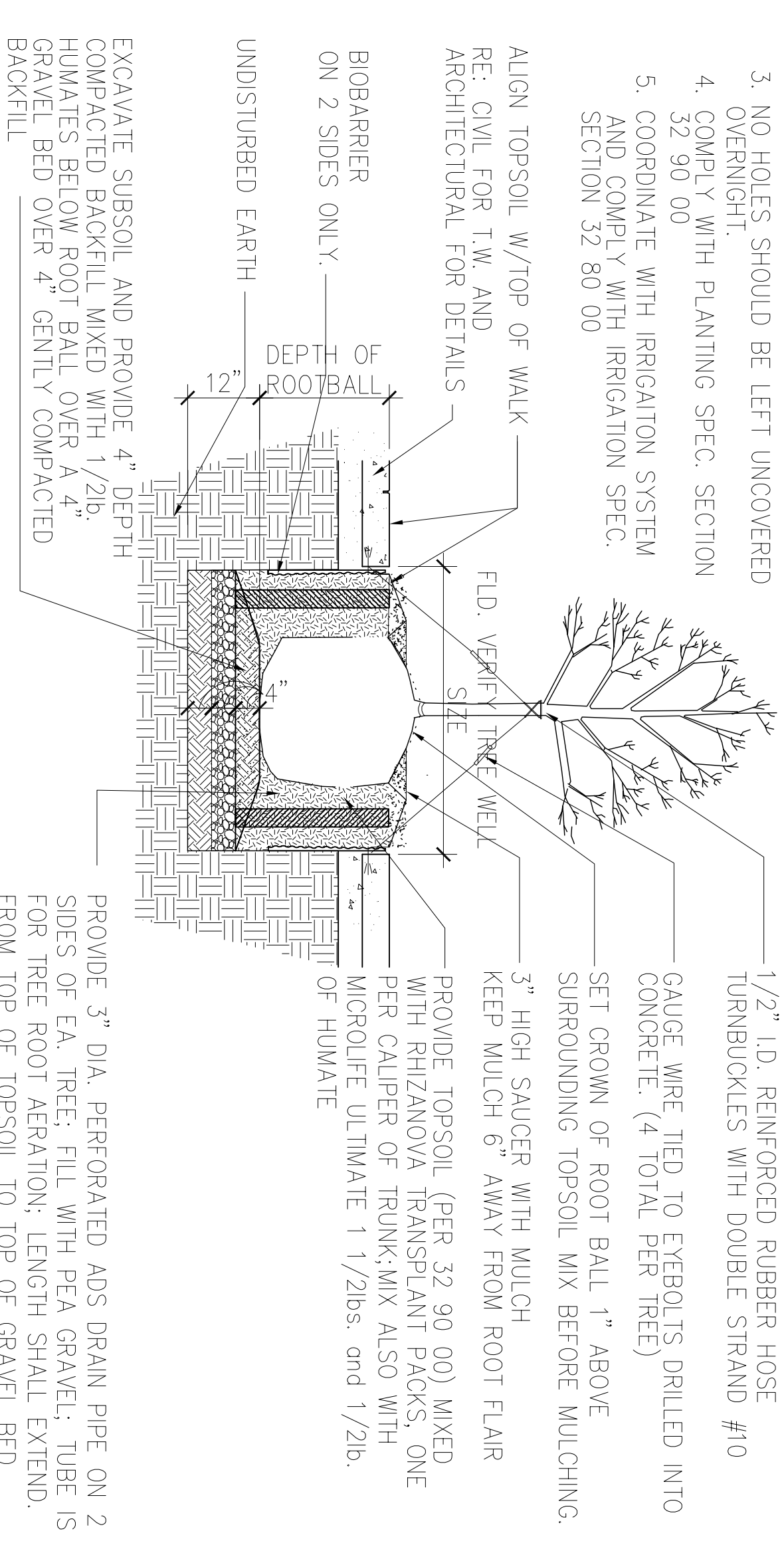
Ownership of Instruments of Service:
All records, plans, specifications, computer files, field data, notes & other documents and instruments prepared for the project shall remain the property of the Houston Community College System as evidenced by the original documents and instruments prepared by the College System, Houston Community College System shall own all common law, statutory and other reserved rights, including the copyright therein.

**ADD'L CAMPUS AREA:
PROVIDE TREES
AND DETAILS**

Scale: As Noted

L1.01

- TYPICAL TREE NOTES:
1. DO NOT ALLOW AIR POCKETS TO FORM WHEN BACKFILLING.
 2. TREE SHALL BE SECURED W/FOUR (4) GUY WIRES TO BE REMOVED AT END OF GUARANTEE PERIOD.
 3. NO HOLES SHOULD BE LEFT UNCOVERED OVERNIGHT.
 4. COMPLY WITH PLANTING SPEC. SECTION 32 90 00
 5. COORDINATE WITH IRRIGATION SYSTEM AND COMPLY WITH IRRIGATION SPEC. SECTION 32 80 00
- 1/2" I.D. REINFORCED RUBBER HOSE TURNDUCKLES WITH DOUBLE STRAND #10 GAUGE WIRE TIED TO EXPOBOLTS DRILLED INTO CONCRETE. (4 TOTAL PER TREE)
SET CROWN OF ROOT BALL 1" ABOVE SURROUNDING TOPSOIL MIX BEFORE MULCHING.
3" HIGH SAUCER WITH MULCH
KEEP MULCH 6" AWAY FROM ROOT FLAIR
PROVIDE TOPSOIL (PER 32 90 00) MIXED WITH RHIZANOVA TRANSPLANT PACKS, ONE PER CALIPER OF TRUNK-MIX ALSO WITH MICROLUFE ULTIMATE 1 1/2lbs. and 1/2lb. OF HUMATE



EXCAVATE SUBSOIL AND PROVIDE 4" DEPTH COMPACTED BACKFILL MIXED WITH 1/2lb. HUMATES BELOW ROOT BALL OVER A 4" GRAVEL BED OVER 4" GENTLY COMPACTED BACKFILL

ALIGN TOPSOIL W/TOP OF WALK RE: CIVIL FOR T.W. AND ARCHITECTURAL FOR DETAILS

BIOBARRIER ON 2 SIDES ONLY

UNDISTURBED EARTH

PROVIDE 3" D/A. PERFORATED ADS DRAIN PIPE ON 2 SIDES OF EA. TREE. FILL WITH PEA GRAVEL. TUBE IS FOR TREE ROOT AERATION. LENGTH SHALL EXTEND FROM TOP OF TOPSOIL TO TOP OF GRAVEL BED. APPROX. 2FT. COORDINATE WITH DEPTH OF ROOTBALL.

NOTE: BIOBARRIER, RHIZANOVA TRANSPLANT PACKS, MICROLUFE ULTIMATE AND HUMATES ARE AVAILABLE FROM SAN JACINTO ENVIRONMENTAL CONTACT GREG COOPER OR STEVE MORRISON, TEL.NO. 713-957-0909

G5 TREE WELL DETAIL

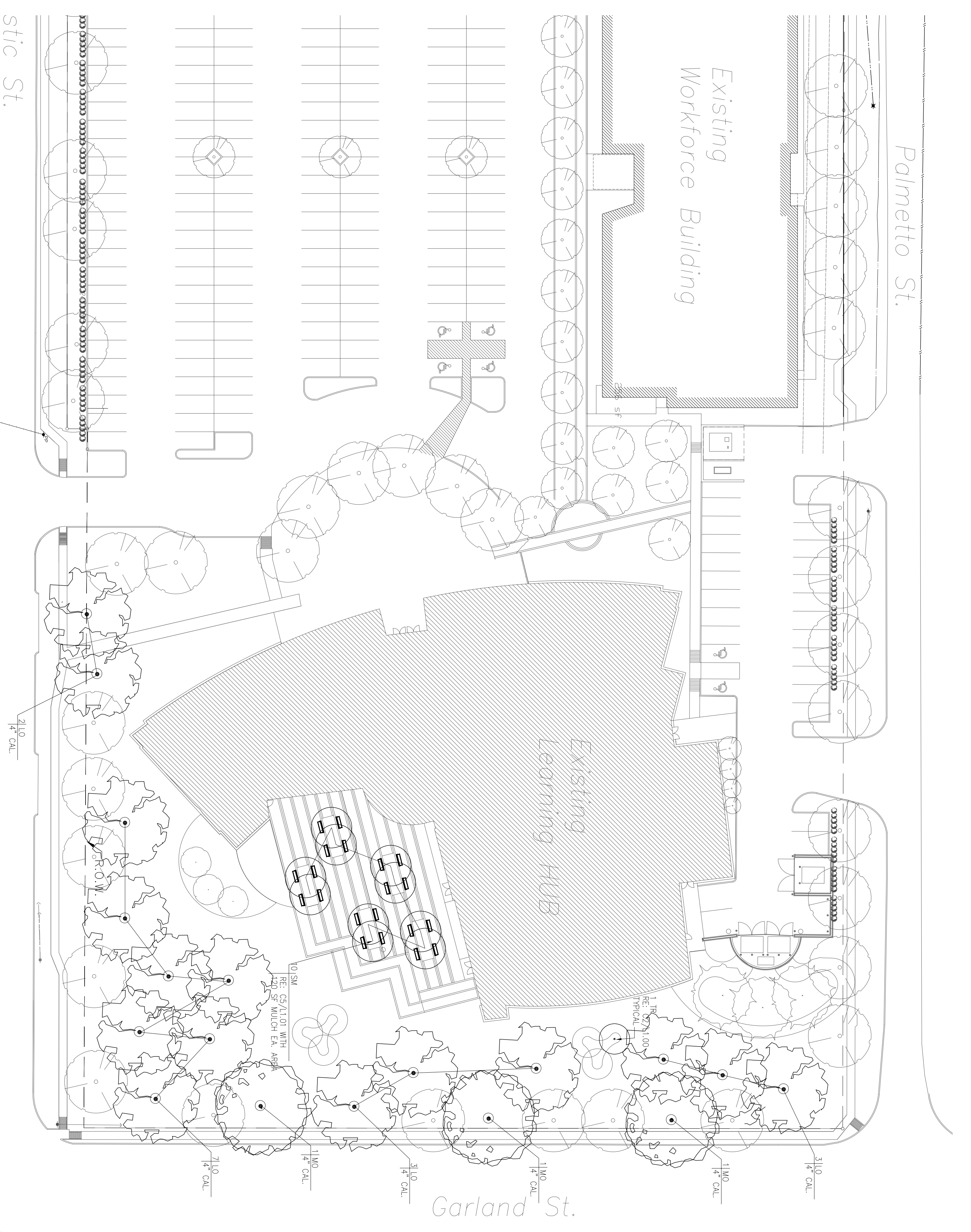
NO SCALE

KEY	QTY	BOTANICAL NAME	COMMON NAME	SIZE	CONDITION	REMARKS
SM	10	Acacia farnesiana	4" CAL. SP. 100 CAL. CONTAINER	15 FT. H. 6 FT. SPREAD	4 FT. CLEAR TRUNK	LOCATE W/ARCHITECT MEMBER'S OAK
MO	3	Quercus polymorpha	4" CALIF. 100 CAL. CONTAINER	10 FT. H. 4 FT. SPREAD	6 FT. CLEAR TRUNK	TEXAS WHITE ROEBUD
BR	1	Cercis canadensis 'Fand'	4" CAL. MULTI-TRUNK CONTAINER	TRF. FORM	4 FT. CLEAR TRUNK, UNIFORM SPREAD	

- GENERAL NOTES:
1. CONTRACTOR SHALL LOCATE UNDERGROUND UTILITIES PRIOR TO EXCAVATING OR PERFORMING CONTRACT WORK FOR TREE INSTALLATION AND GUARANTEE PERIOD. AS REQUIRED ANY DAMAGED UTILITY AT NO ADDITIONAL COST TO OWNER.
 2. TREE LOCATIONS SHALL BE STAKED FOR APPROVAL BY OWNER'S REPRESENTATIVE PRIOR TO PERFORMING CONTRACT WORK.
 3. MAINTENANCE AND MAINTENANCE OF THESE MATERIALS SHALL BE THE RESPONSIBILITY OF THE U.S. PLANTAGE CONDITIONS AND WILL MAKE ANY NECESSARY ADJUSTMENTS AT THEIR OWN COST.
 4. PERFORM PERCOLATION TESTS PRIOR TO INSTALLATION OF TREES AND NOTIFY ARCHITECT OF ANY DRAINAGE PROBLEMS PRIOR TO PERFORMING CONTRACT WORK.

G1 PLANT SCHEDULE – ADDITIONAL CAMPUS AREA

NO SCALE



A1 ADDITIONAL CAMPUS AREA – PROVIDE TREES

1" = 50' = 0"